



GET OUT & VOTE ON NOVEMBER 7

After months and months of preparation, Election Day is upon us. I'd like to again **thank the Record-Journal Publishing Company, Meriden Children First and the Meriden Board of Education** for making the October 23rd Candidate Forum program possible at Washington Middle School.

You can click here <https://www.youtube.com/watch?v=CLohw789uwA&feature=youtu.be> to view the program if you were unable to attend the Candidate Forum in person. A shout out for video editing talent goes to KC Mase of the Middlesex Community College Video Club! Thanks KC.



Please feel free to share this link and please remind your staff and associates to get out and VOTE. Now more than ever, we need informed and engaged citizens to make this experiment called "Democracy" actually work. Plan to proudly wear your "I VOTED" sticker on November 7, 2017.

HARTFORD LINE STATION - WALLINGFORD TO OPEN ON NOVEMBER 6



Rendering of Wallingford Train Station

The Connecticut Department of Transportation (CTDOT) recently announced that the NEW Wallingford train station will be open for business on 11/06/2017. A ribbon cutting ceremony will begin at 12:30 and it is open to the public.

The new station is located at 343 North Cherry Street, with alternative access from North Colony Road, and opens in advance of the May 2018 launch of CTrail Hartford Line passenger rail service.

The Wallingford station features amenities aimed at providing a high-quality passenger experience, including high-level platforms, an overhead pedestrian bridge, overhead canopies, automatic snow melting systems, a passenger information display system, electric vehicle charging, and bicycle racks. A total of 221 spaces will be available for rail passengers in two surface parking lots at the station.

Construction began in December 2014 and cost approximately \$21 million. Residents, businesses and rail passengers are welcome to attend this important event! **In addition, we have included the CT Rail Fact Sheet as part of this Midstate Chamber Newsletter.** Please feel free to share this information as well. Also in reference to The Hartford Line, the President's Message (page 2), has information on three Hartford Line Fare Hearings that will be held in mid-November.



In This Issue:



- ▶ PRESIDENT'S MESSAGE.....2
- ▶ CHAIRMAN'S CORNER.....2
- ▶ CHAMBER CONTACT INFO.....2
- ▶ MEMBER UPDATES.....13
- ▶ MEMBER RENEWALS.....7
- ▶ NEW MEMBERS.....7
- ▶ EVENTS CALENDAR.....8



INSIDE:

Chairman's Corner (pg.2)

**We Call Your
Attention to the
Flyers Inside:**

**Biz After Hours:
Rose Flowers & Gifts
Record Journal
@Farms w/ Hamden CC**

~~~

**Comedy Nite  
Holiday Spectacular  
...and More**

**WE HAVE  
MOVED!**

**Please Update  
Your Records  
with our  
New Address:**

**546 South Broad St., 2C  
Meriden, CT 06450**

**LOTS OF WHAT WE DO FOR MEMBERS IS LINKING YOU** ... to resources, services, support, and fellow members. Here are some EASY LINKS to the Midstate Chamber to "always keep you in the loop":

NEWS: <http://www.midstatechamber.com/News> CALENDAR: <http://www.midstatechamber.com/Calendar>  
RESOURCES: <http://www.midstatechamber.com/Resources> DIRECTORY: <http://www.midstatechamber.com/Directory>



## MESSAGE FROM THE PRESIDENT

### CTDOT RELEASES PROPOSED FARES FOR CTRAIL HARTFORD LINE RAIL SERVICE

Séan W. Moore

The Connecticut Department of Transportation is announcing the proposed fares for the upcoming CTrail Hartford Line rail service and a 35-day comment period. The Department is providing a variety of ways for the public to submit comments on the proposed fares and on the Hartford Line's Service and Fare Equity (SAFE) Analysis. While both CTrail and Amtrak trains will comprise the 17 roundtrips along this corridor, the SAFE Analysis and proposed fares do not apply to Amtrak service operating on this rail line. Federal Transit Administration guidelines mandate that proposed public transit fare changes (including fares for new service) be evaluated for equity and do not pose a disproportionate burden on low-income populations or a disparate impact on minority populations in the public transit service area.



The release of the proposed Hartford Line fares and the SAFE Analysis marks the beginning of a 35-day comment period, which will run from October 23 through November 27, 2017. Comments may be submitted via email to [dot.hartfordlinecomments@ct.gov](mailto:dot.hartfordlinecomments@ct.gov) and via US Mail to Hartford Line Comments, Bureau of Public Transportation, 2800 Berlin Turnpike, P.O. Box 317546, Newington, CT 06131-7546. The SAFE analysis, service description, proposed fares, and related information can be reviewed on the CTDOT website at [www.ct.gov/dot/hartfordlinecomments](http://www.ct.gov/dot/hartfordlinecomments).

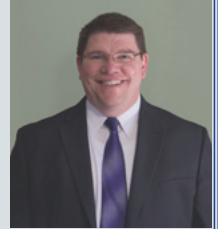
Individuals are encouraged to provide verbal or written comment at any of the Hartford Line Fare Hearings. The Fare Hearings will feature information about the upcoming CTrail Hartford Line service, its proposed fares, and the results of the SAFE Analysis. The Hartford Line Fare Hearings will occur the week of November 13th at the three (3) locations listed below - I am planning to attend the New Haven meeting on the 13th. See you there.

New Haven, Connecticut  
Monday, November 13, 2017  
5 to 8 PM  
New Haven Hall of Records, Room G-2  
200 Orange Street  
New Haven, CT 06510

Hartford, Connecticut  
Tuesday, November 14, 2017  
4 to 7 PM  
Capital Community College,  
Centinel Hill Hall | 950 Main Street  
Hartford, CT 06103

Springfield, Massachusetts  
Wednesday, November 15, 2017  
5:30 to 8:30 PM  
Pioneer Valley Planning Commission  
60 Congress Street  
Springfield, Massachusetts 01104

## CHAIRMAN'S CORNER



Rich Pendred  
A&A Office Systems, Inc.  
Chairman of the Board  
Midstate Chamber of Commerce

### Have you heard the one about .....??

Come out to the Midstate Chamber's Funny Business Comedy Night on November 10th. This year's event will take place at St Joseph's Church in Rosary Hall. It's going to be BYOB and Snacks. We are recommending the following providers for your snacks: [www.midstaterestaurants.com](http://www.midstaterestaurants.com). Let's all support our fellow members!! We will have three comedians this year Meriden's own Rick Carino along with Howie Mason and our Headliner Darren Rivera. Tickets are available for \$25.00 at the Chamber office. Tickets will be available at the door for \$30.00. We also have several BAH's (Business After Hours Programs) in November!! **Rose Flowers & Gifts** will be hosting us on Nov 9th. Come on out and meet the owner, Nicole and see the exciting new changes to the store. We also have two multi Chamber events this month. It's always great to partner up with our neighboring Chambers. November 15th will be the Record Journal's 150th Year Celebration BAH with the Quinnipiac, Cheshire and Southington Chambers, providing plenty of opportunity to network !! Then on November 16th we will have a TableTop Demo BAH and Speed Networking event with the Hamden Chamber. The Farms Country Club in Wallingford will be hosting us once again. Its always a well attend event. Lastly with Thanksgiving coming this month it's the perfect time to say **Thank you**. The Midstate Chamber is grateful for all our members. It's our membership that makes us the Chamber of Choice. There are many other chambers in the area and we are grateful that you chose the Midstate Chamber to support. Thank you to all our volunteers who serve on our Board and Committees to help make our community a better place. We know your time is valuable and I am grateful that you share some of it with us. Thank you Sean, Rosanne and Darlene for your dedication to serve our membership and community. Happy Thanksgiving to all !!!



See you at the next event! - Rich

## ZOEL'S BODY & AUTO CENTER

"Collision Specialists & Full Auto Service"

19 Hall Ave.  
Meriden, CT 06451

DAVE SIROIS  
President  
CT Licensed Appraiser  
[dsirois@zoelsauto.com](mailto:dsirois@zoelsauto.com)



203-237-6464  
Fax: 203-634-4541

[www.zoelsauto.com](http://www.zoelsauto.com)

### Questions? Here's How to Reach Us...

This issue of Chamber News is a member service of the Midstate Chamber of Commerce, Inc. with offices located at 546 South Broad St., 2C, Meriden, CT 06450. You can also visit us on line at [www.midstatechamber.com](http://www.midstatechamber.com). Ph: 203.235.7901 Fx: 203.686.0172 [info@midstatechamber.com](mailto:info@midstatechamber.com). We welcome Chamber member and community news, events and other articles of interest from our diverse membership base. The Midstate Chamber of Commerce serves its member businesses in Meriden, Wallingford, Southington, Berlin, Cheshire and Middletown, Connecticut. We invite all businesses to join with us and become members of our chamber.



For all of your needs visit our members at [www.midstatechamber.com](http://www.midstatechamber.com)





## Holiday Open House

**Thursday, November 9, 2017**

**5:00 to 7:00 p.m.**

**232 W. Main St., Meriden**



Rose Flowers & Gifts invites you to ring in the holiday season with your fellow Midstate Chamber members in this fun and festive atmosphere. Kick start your holiday shopping with gift items from the beautiful new showroom and get ideas to trim your tree.

Meet the new owner, Nicole Anastasio and share memories with the previous owners as well.

Receive 25% off all cash & carry giftware  
(does not include plants, flowers or gourmet food).

Enjoy Refreshments, Gourmet Food Tasting,  
Door Prizes, Networking, and more!



Please **RSVP** to this event by calling the Chamber:  
203-235-7901, e-mailing: [info@midstatechamber.com](mailto:info@midstatechamber.com), or visit  
**[www.midstatechamber.com](http://www.midstatechamber.com)**

*This Business After Hours event is in association with the Midstate Chamber of Commerce to showcase the sponsoring member and to offer both members and members-to-be the opportunity to network and enjoy a wonderful evening.*





# Funny Business Comedy Nite

BACK by  
POPULAR  
DEMAND

**Friday, November 10<sup>th</sup>**

**St. Joseph Church,  
Rosary Hall, 22 Goodwill Ave., Meriden**

**Doors open at 5:30pm**

**Show starts at 7pm**

Get Your Tickets **EARLY** at the Chamber office,  
546 South Broad Street, Meriden *or* at Chamber events.

**\$25 pp in advance; \$30 pp at the door**

21+ only...BYOB & Snacks:

Recommended Chamber Member Snack Providers:

[www.midstaterestaurants.com](http://www.midstaterestaurants.com)

**Get Reserved Seating \*and\*  
On Stage Recognition for your Biz:**

**Sponsor It ...**

**Table of 4 Sponsorship: \$140**

- Also Includes Website Top Banner Ad for 3 months

**Table of 8 Sponsorship: \$240**

- Also Includes Website Home Page Ad for 3 months

**Table of 10 Sponsorship: \$500**

- Includes Website Internal Ad for 6 months

**Cost is \$25 per person in advance; \$30 per person at the door**

\_\_\_\_ # of Tickets    \*or\*    Sponsorships: \_\_\_\_ Table of 4 \_\_\_\_ Table of 8 \_\_\_\_ Table of 10

Names of Attendees: \_\_\_\_\_

\_\_\_\_ Check Enclosed    \_\_\_\_ Bill me please    \_\_\_\_ Credit Card Info Below

Credit Card #(AX, Disc, VI, MC) \_\_\_\_\_

Expiration Date \_\_\_\_\_ 3 digit code: \_\_\_\_\_ Card Zip Code \_\_\_\_\_

Make checks payable to: Midstate Chamber of Commerce, Inc. \*or\* call & reserve with credit card:  
546 South Broad St., Suite 2C, Meriden, CT 06450

RSVP via mail, call 203.235.7901, fax to 203.686.0172, or e-mail to [info@midstatechamber.com](mailto:info@midstatechamber.com)

Featuring...



**Headliner  
Darren Rivera**



**Feature  
Howie Mason**



**Host  
Rick Carino**

Click [HERE](#) or on the Image below to RSVP!



Record-Journal  
myrecordjournal.com



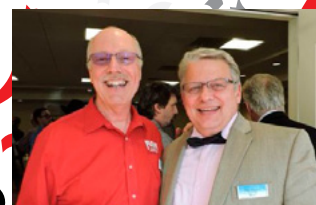
# Save the Date!

Wednesday, November 15, 2017, 5p – 7p

Help the Record-Journal Celebrate 150 Years!

Record-Journal - 500 South Broad Street, Meriden, CT

Win a \$15,000 Marketing Makeover  
from RJ Media Group and image360!



## Cocktails & Heavy Appetizers

Each guest please bring a non-perishable food item – to be donated to New Opportunities of Greater Meriden.



NEW OPPORTUNITIES  
Building Relationships to End Poverty™

RSVP by October 11, 2017 by clicking this link: [www.myrecordjournal.com/4chambers](http://www.myrecordjournal.com/4chambers)

Supporting Sponsors



500 South Broad Street | Meriden, Connecticut | 203.235.1661 | [myrecordjournal.com](http://myrecordjournal.com)

MEDIA THAT MOVES YOUR BUSINESS >>







## Business After Hours

Featuring  
**Speed Networking &  
Table Top Demo**



### Thursday, November 16th

4pm-5pm - Speed Networking ~ 5pm-7pm - Business After Hours

**Hosted By: The Farms Country Club**  
180 Cheshire Road, Wallingford



The Hamden Regional and the Midstate Chambers invite you to a combined event featuring  
Speed Networking and Table Top Demo.

- Speed Networking allows you to connect with multiple people for a brief time.
- Exhibitor's are welcome to display & sell products or information about your business just in time for the holidays.
- The Business After Hours allows for you to connect further with members from 2 Chambers.

We look forward to seeing you! Don't miss this annual event!

See reverse for more information and to RSVP.

**RSVP TO:**  
HAMDEN REGIONAL CHAMBER  
hcc@hamdenchamber.com  
203-288-6431  
www.hamdenregionalchamber.com

**RSVP TO:**  
MIDSTATE CHAMBER  
info@meridenchamber.com  
203-235-7901  
www.midstatechamber.com



### Event Details & Cost:

**3:30pm- Set up for Speed Networkers with Table Top Display**  
**4:00pm - Set up for Table Top Display Only**



**Exhibitor Cost: \$60.00** includes 1 Speed Networking Ticket, 2 Attendees to BAH, 2 drink tickets each and food & 1 draped 6' table

**Speed Networking Only \$10.00 ~ Speed Networking & BAH: \$15**

**Business After Hours General Admission: \$10.00** includes 2 drink tickets and food

**Non-Members General Admission: \$20.00** includes 2 drink tickets and food

Company Name: \_\_\_\_\_

- ☐ I will participate in the Speed Networking only for \$10 per person  
☐ I will participate in the Speed Networking AND attend the BAH for \$15 per person  
☐ We will Exhibit Only for \$60  
☐ We will Exhibit and have a representative participate in the Speed Networking event for \$60  
☐ We will Attend Only for \$10 per person for Members OR \$20 per person for Non-Members

\$ \_\_\_\_\_ Total Cost

Speed Networking Participant: \_\_\_\_\_

Displaying: \_\_\_\_\_

Attendees: \_\_\_\_\_

☐ Bill Me ☐ Charge My Credit Card (American Express, VISA, MasterCard, Discover)

Card # \_\_\_\_\_

Expr. Date \_\_\_\_\_ Verification Code # \_\_\_\_\_ Zip Code of Card: \_\_\_\_\_



## **MEMBER RENEWALS...**

We *recognize and thank* our members who have joined or renewed their investment in the Midstate Chamber within the last month. Visit [www.midstatechamber.com](http://www.midstatechamber.com) for the most up-to-date listing of members in good standing!

AC Exterminating Co. LLC  
Academy Di Capelli  
Automotive Core Recycling LLC  
Best Western Plus  
Bluefrog Plumbing & Drain  
Bradley Home  
Diversified Physical Therapy  
eBenefits Group Northeast, LLC  
Farms Country Club  
Hartford Hospital Rehabilitation Network  
Horton Insurance Services LLC  
Indian Springs Golf Course  
Ion Bank  
Jonal Laboratories Incorporated  
Juan M. Jose, D.D.S., P.C  
Kuhn Employment Opportunities, Inc.  
LaRosa Construction Co. Inc.  
Mirion Technologies  
Mount Hebron Baptist Church  
Pascarella Accounting Group, LLC  
Prestige Construction Home Improvement  
Salvation Army  
Sans-Souci Restaurant  
Squire Travel Agency  
V. Nanfito Roofing & Siding  
Zoel's Body & Auto Center

**Members Use Members!**  
**AND, BE SURE TO TELL THEM YOU ARE A FELLOW MEMBER!**

## **Welcome** **NEW MEMBERS!**

We are delighted to introduce our new members - the lifeblood of our organization and the reason we exist. Please welcome them by visiting their website, sending them an email or stopping by to introduce yourself. The personal touch will help our chamber continue to grow and thrive as we continue on our goal to reach 650 members in the coming months! A membership application is enclosed - **SHARE** it with a friend ... don't keep us a secret!

**American Cancer Society:** 825 Brook St., Rocky Hill, CT 06067. The phone number is 860.379.4874. Lynn Kipphut is our local primary contact for the organization .

**Elim Park Health Care Center:** 140 Cook Hill Rd., Cheshire, CT 06410. The phone number is 203.272.3547 and the fax number is 203.271.7753. Sarah Mach is the primary contact. Elim Park is Cheshire's premier healthcare & rehabilitation center. We accept most insurance's and all are welcome. We specialize in post acute rehabilitation services.

**GoodLife USA:** 22 Victoria Dr., Meriden, CT 06450. The phone number is 203.631.1442. Denise Sands is the primary contact. GoodLife USA is an Independent Travel Services Agent.

**Haynes Construction Company:** 32 Progress Ave., Seymour, CT 06483. The phone number is 203.888.9048 and the fax number is 203.888.5358. Rosemary Davidson is the primary contact.

**Meriden Tax Services:** 440 W. Main St., Meriden, CT 06451. The phone number is 203.204.1112 and the fax number is 203.440.2236. Jose Mendoza is the primary contact for the business, providing tax services for businesses and individuals AND small business accounting services AND Translation, Immigration Services AND Notary Public. Se Habla Espanol.

**Don't Keep Us a Secret: Kindly SHARE the enclosed membership application with your friends in business & invite them to join US \*or\* attend an event with you!**



**HUBCAP Wallingford**

*CoWork Independently, Together*

Incubator & Community Room  
\* SPACE AVAILABLE \*

128 Center Street | Downtown Wallingford

203.626.9351

[cwallace@hubcapwallingford.org](mailto:cwallace@hubcapwallingford.org)



## UPCOMING NOVEMBER EVENTS:

Mark your calendars, iPhones, Droids, etc. with these event dates. **M** = Chamber or Business event; **C** = Community event. More details and RSVP information for these events may be found on [www.midstatechamber.com](http://www.midstatechamber.com)! Chamber event RSVP line: 203.235.7901



*This QR code in the upper right corner also brings you right out to our business and community calendars.*

**This is a SHORT LIST of some of our KEY events – for MORE business and community events including Chamber Committee meetings - details & updates visit...[www.midstatechamber.com/Calendar](http://www.midstatechamber.com/Calendar)**

**HELP us GROW: Invite Your Biz Neighbors to JOIN!  
Earn Chamber BUCKS for you & your biz. 203.235.7901**

- C** Fri, Nov 3, 5:30 pm: Ladies Night Out Presented by Easterseals at La Bella Vista, Ponte Club, Waterbury.
- C** Fri, Nov 3, 6:30 pm: PNA Friday Night Feast at Polish National Alliance, Wallingford.
- C** Sat, Nov 4, 9:30 am: CT Baptist Home Annual Fall Fair in their Community Room.
- M** Sat, Nov 4, 3:00 pm: *Bill Passarelli from Edward Jones Presents Financial Workshop: Ready or Not? Preparing for the Unexpected at the Meriden Public Library.*
- M** Thu, Nov 9, 9:00 am: *SCORE – Confidential Business Counseling Sessions at the Chamber of Commerce.*
- M** Thu, Nov 9, 5:00 pm: *Business After Hours Featuring Rose Flowers & Gifts. See enclosed flyer. Register Now.*
- M** Fri, Nov 10, 6:00 pm: *“Funny Business” Midstate Chamber’s Comedy Night at St. Joseph Church Rosary Hall (basement). See enclosed flyer - Reserve Now!*
- C** Sat, Nov 11, 7:00 pm: DC Comics Presents Justice League Night: Bridgeport Sound Tigers at Webster Arena, Bridgeport.
- M** Mon, Nov 13, 5:00 pm: *Hartford Line Fare Hearing at New Haven Hall of Records, New Haven.*
- M** Tue, Nov 14, 4:00 pm: *Hartford Line Fare Hearing at Capital Community College, Hartford.*
- M** Wed, Nov 15, 5:00 pm: *Business After Hours: Record Journal 150 Year Celebration with Multiple Chambers. See enclosed flyer - Kindly register via this special link: [www.myrecordjournal.com/4chamber](http://www.myrecordjournal.com/4chamber)*
- M** Thu, Nov 16, 4:00 pm: *Speed Networking with the Hamden Regional Chamber Members at the Farms Country Club. See enclosed flyer - RSVP now.*
- M** Thu, Nov 16, 5:00 pm: *Table Top Demo Business After Hours at Farms Country Club. See enclosed flyer. Register Now!*
- C** Thu, Nov 16, 6:30 pm: *MidState Medical Center Open House - New Hispanic Women’s Cancer Support Center.*
- C** Sat, Nov 18, 9:30 am: *Franciscan Christmas Fair at Franciscan Life Center, 271 Finch Ave., Meriden.*

**And, LIKE us on FACEBOOK and FOLLOW us on TWITTER: @MidstateCoC**



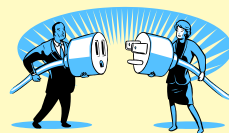
Twitter - Follow us : @MidstateCoC



Like us: [www.facebook.com/MidstateCoC](http://www.facebook.com/MidstateCoC)

## COMMITTEE CONNECTION

A LOT of work happens at the committee level here at the Midstate Chamber. We do encourage your involvement and that of your employees on any committee! ALL committee meeting dates and times are listed on the Midstate Chamber’s website. Come on out and sit in on a meeting to try it - you will like it: the experience, sharing, connections and more!



**Your participation helps YOU, helps YOUR  
BUSINESS and helps OUR CHAMBER! Questions? Call us at: 203.235.7901**



**BREAKFAST CLUB TV - The Chamber’s Breakfast program is NOW AIRING on Cox Public Access #15 - Frontier: #99 on Mondays at 9:00 p.m. Check the chamber website for details and get your popcorn ready!**



**Find business resources at: [www.midstatechamber.com](http://www.midstatechamber.com)**





## All Aboard!

# CTrail Hartford Line

## Launching May 2018!



Wallingford Station (Sept. 2017)

### Service:

- Provides fast, convenient and reliable regional passenger rail service.
- Significantly increases weekday roundtrip rail service between New Haven and Springfield, increasing from 6 to 17 per day between New Haven and Hartford, and increasing from 6 to 12 per day between Hartford and Springfield.
- Trains will operate at speeds up to 110 MPH, with an average travel time of 81 minutes between New Haven and Springfield.
- Encourages economic growth and development around stations.
- Creates livable and sustainable communities.

### Making Connections:

- Connections in New Haven to Metro North trains traveling to New York City.
- Connections in New Haven to Amtrak regional and Acela service.
- Connections in New Haven to Shore Line East rail service.
- Express bus service to Bradley International Airport from Hartford.
- Transfer in Hartford to CTfastrak.
- Easy transfers in Hartford and New Haven to local transit options.

### Fares and Service Schedule:

- Low cost fares similar to current Shore Line East service.
- Updated website with train schedules coming soon.
- Parking fees are expected to be \$2 per day/\$20 per month, with free parking on weekends/federal holidays.
- Fare payment can be paid by cash or by utilizing a TVM, which accepts debit and credit cards.

### Stations and Amenities:

- New, modern stations in Berlin, Meriden and Wallingford featuring high-level platforms, overhead pedestrian bridges and increased parking.
- Passenger focused amenities including an automatic platform snow melt system, a real time passenger information display system, bike racks, ticket vending machines (TVM) and electric vehicle charging stations, among others.
- Meriden and Wallingford will open Fall 2017 with Berlin following in early 2018.
- High-level platforms at Hartford Union Station (opened Summer 2016) and New Haven State Street (opening late 2017).
- Americans with Disabilities Act (ADA)-compliant.

### STATIONS SERVED

- New Haven Union Station
- New Haven State Street Station
- Wallingford
- Meriden
- Berlin
- Hartford Union Station
- Windsor
- Windsor Locks
- Springfield Union Station

### FUTURE STATIONS

- North Haven
- Newington
- West Hartford
- Enfield



Berlin Station (Sept. 2017)



Meriden Station (Sept. 2017)

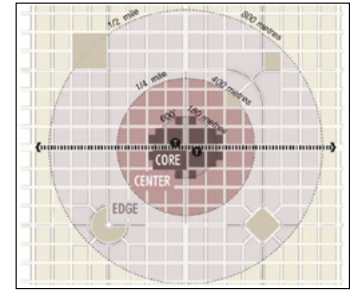
### SIGN UP - STAY INFORMED!

Visit the NHHS Program's website at [www.nhhsrail.com](http://www.nhhsrail.com) and subscribe for email alerts to receive the latest information. You may also visit us on Facebook and Twitter!





## Transit-Oriented Development Factsheet



### Defining TOD

#### WHAT IS TOD?

A high density, pedestrian oriented, mixed-use development located within a short walk of transit stations. Other Core Principals include:

- Medium to high density development denser than the community average
- Compact, high quality, well-designed pedestrian oriented environment
- An active defined center
- Innovative parking strategies

#### BENEFITS OF TOD

- Leads to less reliance on cars
- Promotes walkability
- Enhances economic development
- Increases land value



**Meriden**, a key station stop along the CTrail Hartford Line, is an emerging transit center and an early transit-oriented development (TOD) success story. The City's TOD program seeks to transform the half-mile area around it into a vibrant neighborhood that includes new residential and commercial development, public spaces and improved access to public transportation. Several other projects are completed or underway, including construction of three mixed-use TOD projects that include 295 new residential units and 31,000 square feet of commercial space, a 273

space parking garage, a 14-acre town green, and demolition of the Mills public housing project and the former Record Journal building. Ongoing public and private investment in Meriden's TOD projects exceeds \$150 million.

#### Additional Hartford Line TOD Opportunities

**North Haven:** Recent efforts to encourage TOD include the establishment of a Medical Epicenter Elderly Residential Zone (MEERZ) district, adoption of a Tax Incentive Program and completion of a Walkability and Livability Plan. Key completed/ongoing redevelopment sites include the North Haven Medical Center, Village on State, and redevelopment of the former Pharmacia and Upjohn site.

**Wallingford:** Completed a TOD Plan that features shifting existing industrial development to the north, freeing up space for mixed-use and retail development in Downtown. The existing Parker Place apartment complex near the station offers a precedent for TOD and is expanding 200 units. The Town is also making efforts to encourage and support TOD by creating a new Town Center zoning district and reducing off street parking requirements.



Montgomery Mills, Windsor Locks

**Berlin:** Improving accessibility between Depot Crossing, a mixed-use development on Farmington Avenue and the new station. The Town is advancing several redevelopment opportunities near the station, while maintaining the existing character of the area.

**West Hartford:** The future Hartford Line station has promise to emerge as a transit-oriented multi-modal hub. Turnover of existing large scale retail establishments with considerable off-street parking, as well as large-lot industrial sites, provide the potential for future redevelopment as mixed-use TOD near the station.

**Windsor:** Recent TOD development includes the First Town Square condo complex and the Windsor Station Apartments complex. Windsor has potential for targeted infill development to enhance the retail presence and mixed-use nature of Windsor Center. The Town has identified numerous priority development sites in the area surrounding the new station.



Windsor Station Apartments

**Windsor Locks:** Completed a TOD Plan that outlined potential development sequencing options in conjunction with infrastructure improvements and regulatory changes. The Town is securing State funding to complete pre-development site work and complementary roadway improvements near the future station. Montgomery Mills, a 160-unit adaptive reuse of a former mill, is undergoing redevelopment and will help create a transit town center along Main Street.

**Enfield:** The Town's goal is to create a transit center with complementary development in a former casket factory, and to increase accessibility to the future station. Also, the Town has identified a number of potential redevelopment sites, is advancing an economic development strategy and has secured millions of dollars in federal and state grants to support TOD-related initiatives.







Thank you to our  
Premier Sponsor:



**Thursday, December 7, 2017**

**5:30 pm - 7:30 pm**

**275 Research Parkway,  
Meriden**



You will enjoy:

- Passed and Displayed Hors d'oeuvres
- Pasta Station & a Surprise Station
- Sweet Treats & Hot Cocoa Station
- House Beer & Wine
- Tea Cup Raffle
- Candy Cane Networking
- Cash Bar for Other Beverages
- Holiday Music by Silver City Sound & Video
- Bring Non-Perishable Food items or supermarket gift cards

*Chamber Members & Special Guests are invited to THE MOST FESTIVE Networking Event of the Holiday Season! Escape the hustle of the holiday season and join us for a fun filled evening.*

Please RSVP so that we may have your name badge(s) waiting for you when you arrive.

**Only \$37 pp if registered & paid by 11-30-17**

**\$45 pp after 11-30-17**

*Tremendous Sponsorship Opportunities on Reverse.*

Company: \_\_\_\_\_

Attendees: \_\_\_\_\_

\_\_\_\_ Premier Sponsor \_\_\_\_ Co-Sponsor \_\_\_\_ Sponsor \_\_\_\_ Tabletop Sponsor \_\_\_\_\_ # of Attendees

\_\_\_\_ Check Enclosed \_\_\_\_ Credit Card # \_\_\_\_\_

Expr. Date: \_\_\_\_\_ Zip Code \_\_\_\_\_ Ver. # \_\_\_\_\_

Midstate Chamber of Commerce, Inc.  
546 South Broad St., Suite 2C, Meriden, CT 06450  
203-235-7901 - Fx: 203-686-0172 - info@midstatechamber.com  
**www.midstatechamber.com**





# 2017 Holiday Celebration



## Premier Sponsor—\$1,100

*Terrific opportunity to entertain clients & staff*

- 20 Event Tickets
- 1 Minute "Commercial" or Holiday Wish
- Web Ad for 2 Months - prime placement
- Full Display Table
- Banner Displayed
- LOGO on Table Signs
- Full Screen Recognition at Event



## Co-Sponsor—\$555

*A great night out for the small office & staff*

- 12 Event Tickets
- Web Ad for 2 Months - prime placement
- Full Display Table
- LOGO on Table Signs
- Half Screen Recognition at Event



## Sponsor—\$400

*A wonderful venue to showcase your business*

- 8 Event Tickets
- Shared Display Table
- Company Name on Table Signs
- Quarter Screen Recognition at Event



## Tabletop Sponsor—\$225

*Perfect opportunity to promote your business to 150+*

- 4 Event Tickets
- Partial Display Table
- Company Name on Table Signs



## MEMBER UPDATES

This QR code in the upper right corner also brings you right out to our member news section of the website where you can view FULL news articles by submission date OR by member. Just SCAN and CLICK!



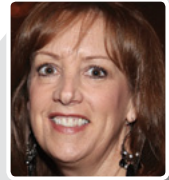
**Find ALL of our members' news online:**

<http://www.midstatechamber.com/News>

## LOOKING TO GROW YOUR BUSINESS?

We are the only publication that reaches every home in central Connecticut, more than 265,000 readers in print and even more online!

Put Elaine to work for your business today.  
Contact Elaine at 203.317.2327  
or [ejustino@rjmediagroup.com](mailto:ejustino@rjmediagroup.com)



Call **Elaine Justino**,  
your media consultant for the  
Record-Journal, Weekly Citizens  
and Homebase Digital.

MEDIA THAT MOVES YOUR BUSINESS FORWARD >>

**ASG Information Technologies** estimates that 43% of cyber attacks target small businesses. Why? Because small businesses do not believe they are a target and therefore have no security systems and protocols in place. Protect your information because 60% of small companies that have a major cyber attack go out of business within 6 months. It is an unfortunate fact that many of the network security hazards threatening small businesses not only come from outside but also from within the small business ranks. Employees without proper training can unwittingly download malicious software or disgruntled employees can abuse their access for their own benefit. Most small business owners do not have the time or know-how to monitor employee internet usage and network activity to stop these serious threats. ASG Information Technologies has a free report - **7 Most Critical IT Security Protections Every Business Must Have in Place NOW to Protect Themselves from Cybercrime, Data Breaches, and Hacker Attacks**. Cybercrime is so widespread that it's practically inevitable that your business whether large or small will be attacked. Visit <http://www.asgct.com/wordpress/wp-content/uploads/2017/05/The-7-Most-Critical-IT-Security-Protections.pdf> to learn how you can help protect your business.



ASG Information Technologies

**Best Western Plus - Berlin:** Lisbell Rivera, Director of Sales is excited to share this information with her fellow Midstate Chamber members: Eddie Rudisill is the new Operations Manager for the Berlin hotel. Also, the hotel just underwent renovations and offers: full hot breakfast buffet, special suites for long term stays, and also has a heated indoor pool, among other amenities! Contact Liz at: Best Western Plus Inn & Suites, 2253 Berlin Turnpike, Berlin, CT 06037; 860.375.4330.



**Connecticut Baptist Homes -** Come experience independent, carefree living in a caring and safe environment! Enjoy hotel-like accommodations which supports self-sufficiency and the pursuit of lifelong hobbies and interests. An affordable monthly fee includes:

- Attractively decorated private rooms & private bathrooms (our furniture or yours);
- 3 Chef-prepared meals daily; Housekeeping and Laundry Service;
- An array of recreational and spiritual activities and programs; Cable television; Free parking; Emergency call system;
- Access to onsite beauty and barber salon and podiatry service;

Contact Gwen Sobiech at: 203-237-1206 for a Lunch & a Tour - COME SEE FOR YOURSELF!!!

**Casa Di Roma Pizzeria Restaurant,** 103 Main Street, South Meriden, CT is now serving beer and wine. So, stop in soon to enjoy the cozy atmosphere and their mouth-watering food. There's something for everyone, including pizza, Italian dishes, seafood and specials - dine in, take out or have them deliver right to you! 203-235-0905.



**Celebrity Nurses Homecare -** Licensed homecare company providing companions and homemakers (HCA0001134). We are available 24 / 7 If you or your loved one needs home care services. We also provide training in CPR - BLS; CNA; HHA. Contact Michael at 203-440-9744.



Trey Bongiovanni  
Principal Agent / Owner  
107 E Main Street  
Meriden, CT 06450  
203-237-7923

[tbongiovanni@paradisoinurance.com](mailto:tbongiovanni@paradisoinurance.com)



Find community resources at: [www.midstatechamber.com](http://www.midstatechamber.com)



10<sup>th</sup> ANNUALLadies  
Night Out

presents:

Friday, November 3<sup>rd</sup>, 2017 | 5:30 pm – 10:00 pmLa Bella Vista, Ponte Club  
380 Farmwood Road, Waterbury, CT

Ladies can shop all night long and purchase great items from a variety of vendors. Buffet stations and delicious desserts, door prizes, music, dancing and special drawings and silent auction.

\$50 Per Person

Reservations are required, no tickets sold at the door  
Cash Bar Available

For nearly 80 years, Easterseals has been the indispensable resource for people and families facing disability. We believe that everyone facing a disability can reach their potential and our diverse programs and services support this belief.

Throughout the Greater Waterbury, Central and Naugatuck CT communities, we strive to provide a broad network of services including school readiness education, early intervention, rehabilitation services, vocational services and auxiliary services. These services assist children, adults and their families to live, learn, work and play as integral members of the community.

Easterseals is changing the way the world defines and views disabilities by making profound, positive differences in people's lives every day.

Carolee Kalita • events@eswct.com • (203) 754-5141 • www.easterseals.com/waterburyct

## Best Western Plus

Our Newly Renovated Hotel not only offers one of the best values in Berlin, but did you know we offer suites designed for long term stays?!

Only \$89 + tax

Deluxe King Room



- FULL HOT BREAKFAST BUFFET Every Day! With Omelets, Breakfast Meats, Fresh Waffles and More!
- Deluxe Guest Room with Free Wi-Fi, Flat Screen TV, HBO, Microwave and refrigerator!
- Fitness Center & Guest Laundry
- Complimentary Internet Café
- Newly Renovated Rooms
- Short Distance to shopping Centers
- Indoor Heated Pool

Call 860.828.3000 to Make Reservations

2253 Berlin Turnpike  
Berlin, CT 06037 | www.BWCentralCT.com



**Connex Credit Union** It's always a good thing to put away something for tomorrow! And with Connex's 18 month CD Special, you can earn up to 2.00% APY\* on your nest egg. So don't just save for the future. Grow it! Open your account at any branch or call 1-800-CR-UNION. The application deadline has been extended to November 30, 2017. Limited to new funds only, please. The local branch is located at 533 So. Broad St., Meriden or call them at 203.603.5844.



UNBANK WITH US

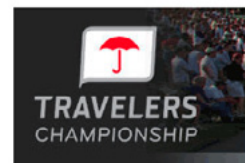
**City of Meriden - START / SPRUCE UP YOUR BUSINESS IN DOWNTOWN MERIDEN!**

Are you a business owner looking for a downtown location or a downtown property owner looking for a commercial tenant? Then the Meriden Match program may be able to help! The City of Meriden is pleased to announce the start of the Meriden Match Program! This program is designed to provide forgivable loans up to \$10,000 to commercial property owners and business owners located in Meriden's Transit Oriented Development (TOD) District and other eligible areas. These loans, which are funded through the City's Community Development Block Grant (CDBG) program, can be used to improve exterior façades and for small business start up costs and interior fit out costs. Property owners and business owners applying for the program together can receive up to \$20,000. Applicants will be required to provide matching funds in order to qualify. Interested applicants are encouraged to submit a pre-application to the City of Meriden by 4pm on Friday, December 1st, 2017. A full description of the program's eligibility requirements, timeline, as well as application materials can be found at the link below. Any remaining questions can be directed to the Meriden Department of Economic Development by phone at 203 630 4105 or via email at msarcione@meridenct.gov. Download Pre-application and return to the City of Meriden by December 1, 2017. Good luck! Visit: <http://www.meriden2020.com/Business/meriden-match/> for details and to download an application.

**Spice Catering Group** - We are now taking orders for holiday parties and events! We can do anything from drop-off catering to fully staffed parties. We come to your home, office or other venue and do all the work while you relax and enjoy. Visit <http://spicecateringgroup.com/services-social-catering.html> to visit their website for some menu ideas! Contact them today to customize your menu and party details! info@spicecateringgroup.com or 203-516-5665.



**Travelers Championship** recently announced that the 2017 tournament generated \$1.72 million for more than 165 local charities, including The Hole in the Wall Gang Camp, this year's primary beneficiary. It's the largest core amount raised in the history of the tournament. *This year's fundraising effort brings the total money generated to \$14.7 million since Travelers became title sponsor in 2007. More than 750 charities have received funds from the tournament over that time.* "We're proud of the partnerships we've built with local organizations that need help," said Travelers Championship Tournament Director Nathan Grube. "Handing out these checks to so many worthy charities is the highlight of our year. We won't forget the week we had at TPC River Highlands, with Jordan Spieth winning in such dramatic fashion and the celebration that ensued. But knowing that more than \$1.7 million is being given to such a wide spectrum of nonprofits this year reminds us why we do this. It inspires us." *The tournament donates 100 percent of its net proceeds to charity. It also delivers a significant boost to Connecticut's economy. A new study by the Connecticut Economic Resource Center (CERC) estimates that the Travelers Championship has an annual economic impact on the state of \$68.2 million.* "We are committed to our community and raising as much money as we can through the tournament for charity, which has always been the driving force," said Travelers Executive Vice President and Chief Administrative Officer Andy Bessette. "As this CERC study shows, our local economy and many businesses benefit, too. We'd like to thank everyone involved with this year's Travelers Championship - volunteers, players and fans - for making it a truly memorable experience. I know 2018 will be even bigger and better." **Preparation has already started for the 2018 Travelers Championship, which will be held June 18-24 at TPC River Highlands. For more information, visit [www.TravelersChampionship.com](http://www.TravelersChampionship.com).**

Find it all at: [www.midstatechamber.com](http://www.midstatechamber.com)



# Meet The Board of Directors



*Gary C. Havican is Senior Vice President of Hartford HealthCare and President of Hartford HealthCare's Central Region which includes MidState Medical Center in Meriden and the Hospital of Central Connecticut with its Bradley Memorial campus in Southington and its New Britain campus. Gary holds a BA in History from Western CT State University and an MBA in Executive Management from the University of New Haven. Chamber membership enables Gary to support the business community and add value to others. He also has enjoyed our Networking and Education events and representing the Chamber and MidState Medical Center throughout the community. Gary enjoys playing the guitar, coaching, camping and the beach. He resides in Middlefield with his fiancée and three children.*

**Higher Movement:** Still Enrolling for Fall Classes! Fall registration is still open for a limited time! Classes are filling up so please be sure to register if you have not yet done so. If you would like more info regarding our classes and pricing, please contact us at [highermovementdance@gmail.com](mailto:highermovementdance@gmail.com) or (203) 235-2630. Also, join us for one of the upcoming dance conventions we are attending: SDA Class Experience - Sunday November 5th @ Foxwoods; Excel in Motion - January 12th - 14th @ Foxwoods; Pulse and Camp Pulse - February 9th - 11th in Boston. Want Higher Movement Apparel? Order by November 6th! We are going to be placing an apparel order on Monday, November 6th. If you would like to order a warm up jacket, sweatshirt, t-shirt, tank top or anything else, please let us know before November 6th. We also must have your payment to place the order. Thank you!



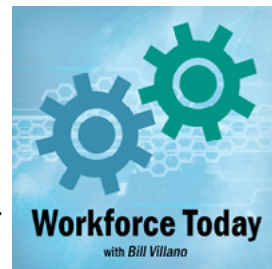
**Jersey Mike's**, a fast-casual sub sandwich franchise with more than 1,500 locations open and under development nationwide, believes that making a sub sandwich and making a difference can be one and the same. Jersey Mike's offers A Sub Above®, serving authentic fresh sliced subs on freshly baked bread - the same recipe it started with in 1956 - and is passionate about giving back to its local communities. For more information visit: [www.jerseymikes.com](http://www.jerseymikes.com) and follow them on Facebook: [www.facebook.com/jerseymikes/](http://www.facebook.com/jerseymikes/) and Twitter [www.twitter.com/jerseymikes](http://www.twitter.com/jerseymikes).



**The Bridgeport Sound Tigers**, proud AHL affiliate of the New York Islanders, are thrilled to be a member of the Midstate Chamber of Commerce. Season tickets and flex plans are on sale now for the 2017-18 campaign, offering the greatest savings and ultimate flexibility of all ticket packages. Pick between a full-season, 20-game, 15-game or 10-game plan and you'll also be entitled to exclusive benefits, including the ticket holder exchange policy, which means any unused tickets can be traded for future games. Seating options are broken down into six different pricing sections, giving you the flexibility to fit Sound Tigers' hockey into any kind of budget. Lock in your seats today and receive two (2) free tickets to the 2017-18 home opener by contacting Jim Bataille - your Midstate Chamber contact at 203-345-4812 or e-mail [jim.bataille@harboryardse.com](mailto:jim.bataille@harboryardse.com). Visit [www.soundtigers.com](http://www.soundtigers.com) to view whole Sound Tigers website. Jim is ALSO your key contact for other events that are at the Webster Bank Arena in Bridgeport, including the **Cirque Musica Holiday Presents Believe on Dec. 12 featuring the Greater Bridgeport Symphony**.



**Workforce Alliance** Workforce Today Podcast has created their 10th Episode on retail was our most popular yet, pushing downloads up close to 13,000! As a follow up, we just released Retail 2.0: A Conversation with Walmart. Bill Villano was at the Walmart HQ in Arkansas and talked with Julie Gehrki from the Walmart Founda-



tion. Here's the summary: Walmart's Julie Gehrki talks about training its 2.3 million associates, upward mobility within the company and how customer behavior impacts job roles. You can stream live from the website or you download the episodes and the Workforce Today App from iTunes or Google Play - [www.workforcealliance.biz/team/workforce-today](http://www.workforcealliance.biz/team/workforce-today).



PROMOTION



EDUCATION

**NOW is PRIME TIME**  
**to JOIN Midstate Chamber of Commerce.**  
**Kindly SHARE this APPLICATION**  
**with your business associates!**



LEADERSHIP



NETWORKING

|                 |          |
|-----------------|----------|
| 1-5 Employees   | \$280.00 |
| 6-10 Employees  | \$295.00 |
| 11-20 Employees | \$410.00 |
| 21-30 Employees | \$525.00 |



*The Midstate Chamber supports, promotes and serves our member businesses in Berlin, Cheshire, Meriden, Southington, Wallingford and throughout central Connecticut.*

3 Colony Street, Suite 301, Meriden, CT 06451

Ph: 203.235.7901 Fax: 203.686.0172

info@midstatechamber.com www.midstatechamber.com

## Membership Application

Company Name: \_\_\_\_\_

Address: \_\_\_\_\_

City, State, Zip: \_\_\_\_\_

Phone: \_\_\_\_\_ Fax: \_\_\_\_\_

Company Website: \_\_\_\_\_

Type of Business/Classification: \_\_\_\_\_

# of Owners: \_\_\_\_ # of Employees: \_\_\_\_ Full-Time \_\_\_\_ Part-Time \_\_\_\_ Year Founded: \_\_\_\_

Contact Person: \_\_\_\_\_ Contact's Phone: \_\_\_\_\_

Contact's E-Mail: \_\_\_\_\_

### How Did You Learn About Us?

#### Chamber Activity / Interests:

**Promotion:** ☐ Member Directory Advertising ☐ Web Site Advertising ☐ Chamber Business Expo ☐ Newsletter Advertising ☐ Marketing Committee, etc

**Education:** ☐ Education Committee ☐ Education Awards ☐ Workshops ☐ School-Business Partnerships ☐ Hispanic Outreach Leaders in Action (HOLA), etc.

**Networking:** ☐ Business After Hours ☐ Breakfast Club Celebrates ☐ Annual Meeting/Dinner ☐ Annual Golf Tournament ☐ Young Business Leaders of CT ☐ Ambassadors ☐ Membership Committee, etc.

**Leadership:** ☐ Government & Business Development Committee ☐ Pizza, Pasta, & Politics ☐ Health Insurance, etc

**\*\* Please Include Your "Web Words":** Web Words are a 25-30 word description of your business that appears with your Member Directory listing on www.midstatechamber.com: \_\_\_\_\_

#### New member add on – Specials—reserve now and save \$50:

- ☐ \$100 web image (appears next to your web listing making you stand out) - \$150 value  
☐ \$100 3 month newsletter ad (business card size) - \$150 value

**\*\* Please E-Mail Your Key Employees Information to info@midstatechamber.com.** Key employees are employees who you wish to receive additional Chamber updates/information and who may be attending events. Key employee information may consist of name, title, direct phone number or extension and e-mail address.

Card#

Exp.

Card Zip Code

Verification Code



Signature \_\_\_\_\_

**A one-time \$15 dollar set up fee is due at time of application**

Membership dues in this organization may be tax deductible as an ordinary & necessary business expense. Dues paid to this 501(c)(6) are not a charitable tax deduction. The organization serves as an advocate for and promotes its member businesses.