



THANK YOU FOR YOUR INVESTMENT IN MAKING CENTRAL CONNECTICUT A BETTER PLACE

- Séan W. Moore

As your President, I sincerely want to **thank you**, our members, for your continued membership with the Midstate Chamber of Commerce. Collectively, our members help fund many of the initiatives that support our schools, improve roads and rail systems and support a healthy business climate.

Your participation allows us to do important work in the local communities, in Hartford and in Washington, DC. While we do not lobby politicians, we do create our legislative agenda and other tools to inform our elected and appointed leaders on the needs and requirements of the business community. Many of them have never owned or operated their own businesses and need to be educated on how each decision and vote will affect our member businesses.

Workforce Development, improved access to state agencies, housing initiatives and economic development are just some of the ways that this chamber works for our members and communities. Through your investment and participation, Chamber efficient staff and a huge team of dedicated volunteers can actively work to make this a truly great place to live, work, learn and play.

Thank you for doing your part in helping to improve central Ct.

In This Issue:



- ▶ PRESIDENT'S MESSAGE.....2
- ▶ CHAIRMAN'S CORNER.....2
- ▶ CHAMBER CONTACT INFO.....2
- ▶ MEMBER UPDATES.....11
- ▶ MEMBER RENEWALS.....5
- ▶ NEW MEMBERS.....5
- ▶ EVENTS CALENDAR.....7

INSIDE:

President's Piece: (pg.2)
Chairman's Corner (pg.2)

We Call Your Attention to the Flyers Inside:

BAH: SAVERS

Member Wellness Breakfast
Platt High Uniform Campaign
Reserve: InSight Magazine Ad
30th Annual Golf Tourney
Travelers Championship

GET NOTICED WITH YOUR AD IN INSIGHT MAGAZINE



This is the final reminder that this is the absolute last chance to reserve your ad space in InSight, the official magazine of the Midstate Chamber of Commerce. This publication features all of our Chamber members along with local and regional information. It's a magazine size community resource for our members in Central Connecticut... and we also include a file, suitable for downloading, on our website www.midstatechamber.com.

We have a variety of ad options starting at only \$300 for an entire years worth of full color promotion. Discounts are available for larger sizes. Please call the Chamber office today to be sure that your presence is known and so you can be found!

LOTS OF WHAT WE DO FOR MEMBERS IS LINKING YOU ... to resources, services, sup-

port, and fellow members. Here are some EASY LINKS to the Midstate Chamber to "always keep you in the loop":

NEWS: <http://www.midstatechamber.com/News> CALENDAR: <http://www.midstatechamber.com/Calendar>
RESOURCES: <http://www.midstatechamber.com/Resources> DIRECTORY: <http://www.midstatechamber.com/Directory>

MESSAGE FROM THE PRESIDENT:



Séan W. Moore

30 YEARS OF GREAT GOLF FOR A GREAT CAUSE

Our 30th Annual Ray Parmentier Golf Classic is one of the best tournaments in central Connecticut for a number of reasons. This fund raiser supports Chamber activities including the Sanford S. Shorr Education Awards. Mr. Shorr was the Executive Director of the Chamber for more than 29 years and to date, we have awarded more than > 144 students over \$117,000 in his honor!

Another great cause is that many of our generous Chamber members are sponsoring Veterans of the Armed Services to play along with us on June 7th. There are 12 Veteran golfers this year in the tournament. It's one of the ways we can continue to show our gratitude for their service and sacrifices.

If you do not golf, you should know that some members and guests actually come to our tournament for dinner only so they can sample some fabulous Violi's food, connect with friends and to participate in the Raffle. Many of the items have been generously donated by our own members for which we are most appreciative. We often package items together so the minimum raffle prize always has a \$35 minimum value...and some prizes are hundreds of dollars each.

New this year, raffle participants can deposit their tickets into the bucket of the BIG prizes of their choice. This will increase the odds of getting the item you really want. After the tickets are selected for each big item, all remaining tickets will go into the Boardman Cup to be in the pool for the rest of the drawings.

This tournament is made possible by a very dedicated team of Golf Committee volunteers lead by Linda Krampitz of Gaylord Specialty Healthcare. Join me in thanking them for their service.

We would also like to thank PROSHRED SECURITY and ImageFIRST Healthcare Laundry Specialists for stepping up as our Presenting Sponsors this year. Along with Diamonds, Gold and Silver Sponsors, they all support these great causes. Thank you!

CHAIRMAN'S CORNER



Rich Pendred
A&A Office Systems, Inc.
Chairman of the Board
Midstate Chamber of
Commerce

The busy summer months are upon us. The Midstate Chamber will be busy this summer helping you promote your business with many key events. **Our 30th Annual Golf Tournament, The Ray Parmentier Classic is coming up June 7th.** There are only a few spots left, so don't be left out!! It's not too late to sponsor a veteran to play or promote your company with a sponsorship. Our Golf committee, led by Linda Krampitz of Gaylord Specialty Healthcare, has done a great job promoting and creating another successful event. You will want to be a part of this. **We have many programs to participate in this summer.** Please check out our monthly Chamber calendar for details on the many events we have to offer

to you and your team. The Midstate Chamber is always looking for ways to grow our organization. We are looking to promote our organization more on social media. Social Media is where our future leaders are and we need to be there as a growing professional organization. We will be looking for content to post on our website and social media outlets. If you have some professional advice on your industry we would love to hear from you. **We will be looking for blogs or articles on your industry. We are still looking for video testimonials that we can post on social media and our website.** Please contact the Chamber office if you have an interest in doing a video or have content you would like to share. Our commitment to our members is to grow as an organization. When the Midstate Chamber grows you will have more opportunities to connect with businesses in our community...which means more opportunities to grow your company. Our Goal is 650 and as always we will hit the goal with your help. Share the Midstate Chamber with your friends and clients. *Let's let the community know why we are your Chamber of Choice.*

See you at the next event! - Rich Pendred



Questions? Here's How to Reach Us...

This issue of Chamber News is a member service of the Midstate Chamber of Commerce, Inc. with offices located at 3 Colony St., Suite 301, Meriden, CT 06451. You can also visit us on line at www.midstatechamber.com. Ph: 203.235.7901 Fx: 203.686.0172 info@midstatechamber.com. We welcome Chamber member and community news, events and other articles of interest from our diverse membership base. The Midstate Chamber of Commerce serves its member businesses in Meriden, Wallingford, Southington, Berlin, Cheshire and Middletown, Connecticut. We invite all businesses to join with us and become members of our chamber.



For all of your needs visit our members at www.midstatechamber.com

Don't Miss the 30th Annual Golf Tourney!

Golf Player Registration

Team Contact: _____

Phone: _____

Email: _____

Players:

1.) Name: _____

Company: _____

Handicap: _____ Email: _____

2.) Name: _____

Company: _____

Handicap: _____ Email: _____

3.) Name: _____

Company: _____

Handicap: _____ Email: _____

4.) Name: _____

Company: _____

Handicap: _____ Email: _____

Please see reverse side for more information.
Please return both sides to us for processing.

Please return to:
Midstate Chamber of Commerce
3 Colony St., Suite 301, Meriden, CT 06451

Phone: 203-235-7901 / Fax: 203-686-0172
E-Mail: info@midstatechamber.com

Golf Registration Fee Includes:

- TWO flights = more chances to WIN! EIGHT TEAM Prizes are awarded!
- Eighteen holes of golf
- Golf cart
- Registration goody bag
- FREE Range Balls on Driving Range (10 - 11:45am)
- Barbecue lunch, buffet dinner
- Fantastic raffle prizes & awards
- Many opportunities for prizes!

Foursome Only: \$775
Individual Players: \$195 per player
Dinner Only / Awards Ceremony: \$60

Program Book Print Ads:

Full Page (10" x 7.5" wide): \$175
Half Page (5" x 7.5" wide): \$125
Quarter Page (5" x 3.75" wide): \$75
Business Card Size: \$50
Inside Front & Back Covers: \$250



Team Hyundai 2016 Boardman Cup Champs with Golf Chairwoman Linda Krampitz



A SELL OUT is Expected

This tournament benefits Chamber activities including the Sanford S. Shorr Education Awards. To date, over \$100,000 has been awarded to deserving area students!

Tournament Schedule

10:00 a.m. - Registration, Free Range Balls & Putting Contest
10:30 a.m. - Barbecue Lunch
Noon - Shotgun Start, Scramble Format
5:00 p.m. - Cocktail Reception, Cash Bar
6:00 p.m. - Awards, Dinner & Prizes

Spectacular Prizes:
Putting Contest Cash Prize
Over \$5,000 in Raffle Prizes!



www.midstatechamber.com

Sponsorship Opportunities

Diamond Sponsors: \$1,400

Includes foursome, special gift for golfers, tee sign, pin flag, full page ad in the program book & recognition at dinner.

Gold Sponsors: \$1000

Includes foursome, tee sign, half page ad in the program book & recognition at dinner. Add a Pin Flag for just \$75.

Silver Sponsors: \$600

Includes twosome, tee sign, quarter page ad in the program book.

Veteran's Sponsorship: *Cannot participate? But we value exposure and promotion for your business? Sponsor a single Veteran or team as listed above, receive that package's perks plus special recognition in the program and during dinner and we find veterans to fill your player slots! A win-win for ALL.*

Hole-In-One Sponsor -

Golf Ball Sponsor -

Carts Sponsor -

Exclusive Putting Contest -

Winner wins 50/50 Cash Prize!

Beer Sponsor:

1/2 page ad in program & signage on course & at dinner

Lunch Sponsor - 3 Available:

Your banner (provided by sponsor) displayed in lunch area & quarter page ad in program book.

Cocktail Hour:

1/4 page ad in program book & your banner in dinner tent. Several available.

***NEW* On-Course Experience:**

Sponsors may set up a table and/or tent on course with your company's give-aways for the golfers.

Pin Flag:

Eighteen flags available with business name embroidered on flag. Sponsor keeps flag!

Tee Sign: Full color name/logo on canvas sign.

Longest Drive: Name or logo on sign

Closest to the Line: Name or logo on sign

Closest to the Pin:

Four holes available with name or logo on a sign.



Wednesday
June 7, 2017

Ray Parmentier Memorial



Presenting Sponsor:



Hunter Golf Club
and
Violi's Restaurant
688 Westfield Road, Meriden, CT

Golf Sponsor Registration

Company Name: _____

Contact: _____

Phone: _____

E-Mail: _____

Sponsorship Level: _____

☐ Sponsor a Veteran (sponsorship or single player)

☐ Program Ad: (Size?) _____

☐ Putting Contest - Exclusive _____

☐ Lunch Sponsor - Exclusive _____

☐ Cocktail Hour _____

☐ On-Course Experience _____

☐ Pin Flag _____

☐ Tee Sign _____

☐ Longest Drive _____

☐ Closest to the Line _____

☐ Closest to the Pin _____

☐ Dinner Only _____

Total Amount: \$ _____

☐ Bill Us

☐ Charge (VISA, MC, Disc., American Express)

CC# _____

Expiration Date: _____

Verification # _____

Zip Code associated with card: _____

Signature: _____

Please return to:

Midstate Chamber of Commerce
3 Colony St., Suite 301,
Meriden, CT 06451

Phone: 203-235-7901 / Fax: 203-686-0172
E-Mail: info@midstatechamber.com





HEALTH & WELLNESS



BREAKFAST



Brought to you by the Health & Wellness
Council of the Midstate Chamber

TUESDAY JUNE 27 | 7:30-9:30 am

Gaylord Specialty Healthcare | Brooker Lecture Hall
50 Gaylord Farm Rd, Wallingford

Once at the Gaylord campus, follow the yellow event signs

This program is for ALL organizations who want to:

- Help Keep Your Employees Healthy
- Improve Your Bottom Line - and - Maybe Waistline!
- Form partnerships to create a healthy workplace culture
- Meet wellness council members and experts in the wellness field

\$20 pp in advance | \$30 at the door

*It's All About
NUTRITION
Dr. DeRosa
Precision Chiropractic &
Nutrition Center*

7:30-8:00 Arrival, Breakfast, Networking
8:00-8:20 Awards and Announcements
8:20-9:30 Presentations including Q&A

*CONCUSSIONS
AUDIOLOGY
PHYSICAL THERAPY
Gaylord Specialty
Healthcare*



Gaylord
Specialty Healthcare

ALTERNATIVE THERAPY LLC
A Professional Counseling Service

Genesis

SPONSORSHIPS FOR EVERY BUDGET

SEE REVERSE FOR OPTIONS

CALL 203.235.7901 | EMAIL info@midstatechamber.com
www.midstatechamber.com



☐ **EXCLUSIVE PREMIER Sponsor: \$895**

- * Introduce main breakfast speaker
- * 1 minute commercial by sponsor at podium
- * Banner Displayed (Banner provided by sponsor)
- * FULL 6 foot Display Table for promotional materials/giveaways
- * LOGO on Program Cover
- * FULL page Ad (4 ½ w x 7 ½ h) in Program
- * 10 Tickets to Event; Reserved Seating
- * Top Banner Ad on Chamber site for 6 months (\$300 value)
- * Logo & link featured on web page
- * LOGO on Flyer e-mailed to 1,700+
- * Recognition on www.midstatechamber.com (averaging 40,000+ unique visits per month) & Facebook/Twitter
- * Recognition in Press Releases
- * Recognition in E-Minders as Premier Sponsor (sent to 1,700+ per message)
- * Recognition at event

☐ **Gold Sponsor: \$500**

- * ½ Page Ad (4 ½ w x 3 ¾ h) in Program
- * 5 Tickets to Event; Reserved Seating
- * Logo on Web Video
- * Display table—6 foot
- * Name Listed on Flyer— e-mailed to 1,700+
- * Recognition on www.midstatechamber.com (averaging 40,000+ unique visits per month) & Facebook/Twitter
- * Recognition at the Event

☐ **Silver Sponsor: \$250**

- * ½ Page Ad (4 ½ w x 3 ¾ h) in Program
- * 2 Tickets to Event
- * Shared Display Table

☐ **Bronze Sponsor: \$100**

- * 1 Ticket to Event
- * Listing in Program

☐ **AD in Program only options:**

- * Full Page: \$250
- * ½ Page: \$100

YES! I want to take advantage of a sponsorship to promote my business & support this IMPORTANT event!

Level: _____ (or check appropriate box above)

Company: _____ Contact: _____

- ☐ Check enclosed
- ☐ Bill me- Chamber Members Only
- ☐ Credit card (AX, Disc, VI, MC)

Credit Card number: _____

Expiration: _____ 3 digit code: _____ Zip Code of card: _____

Kindly remit to: Midstate Chamber, 3 Colony St., Suite 301, Meriden, CT 06451

203-235-7901 / Fax: 203.686.0172

info@midstatechamber.com

www.midstatechamber.com



MEMBER RENEWALS...

We *recognize and thank* our members who have joined or renewed their investment in the Midstate Chamber within the last month.

Visit www.midstatechamber.com for the most up-to-date membership listing!

A & A Office Systems, Inc.

All State Fire Equipment

Allergy Associates of Hartford PC

Casa Di Roma Pizza

Civali's Auto

Concentra Medical Center

CT Department of Rehabilitation Services

For Your Paws Only

IvyRehab Wallingford LLC

JD Byrider

Magnakleen Services

Maier Real Estate

Maryheart Crusaders Inc.

Members First Federal Credit Union

Meriden Center - Genesis Health Care

Mount Southington Ski Area Inc.

Pediatric & Family Care for Natural Med.

Professional Vision Center

Solomon, Krupnikoff & Wyskiel, P.C.

The Money Coach LLC

Updike, Kelly & Spellacy

Valencia Discount Liquor

Members Use Members!

AND, BE SURE TO TELL THEM YOU ARE A FELLOW MEMBER!



HUBCAP Wallingford

CoWork Independently, Together

Incubator & Community Room

* SPACE AVAILABLE *

128 Center Street | Downtown Wallingford

203.626.9351

cwallace@hubcapwallingford.org



We are delighted to introduce our new members - the lifeblood of our organization and the reason we exist. Please welcome them by visiting their website, sending them an email or stopping by to introduce yourself. The personal touch will help our chamber continue to grow and thrive as we continue on our goal to reach 650 members in the coming months!

A membership application is enclosed - **SHARE** it with a friend ... don't keep us a secret!

Cloudsmart: 4 Pin Oak Dr., Branford, CT 06415. The phone number is 203.315.8130 and the fax number is 203.315.8206. Rich Pendred is the primary contact. Cloudsmart is an affiliate of A & A Office Systems, Inc. and is a tier 3 data center offering hosted solutions, colocation and managed services.

Macy's Backstage: 470 Lewis Ave., Meriden, CT 06451. The phone number is 203.238.0741. James Amadeo is the primary contact. Macy's Backstage has a full line of hard & soft goods, home, ladies, men's and kids clothing, furniture, seasonal, toys, family shoes and luggage.

Upper Room Christian Center 262 Bee St., Meriden, CT 06450. The phone number is 203.440.4183. Pastor Howard Daniel is the primary contact. The Upper Room is here to minister healing to the hurting - please come and visit us - you won't forget us.

Don't Keep Us a Secret: Kindly SHARE the enclosed membership application with your friends in business & invite them to join or attend an event with you!

ZOEL'S BODY & AUTO CENTER

"Collision Specialists & Full Auto Service"

19 Hall Ave.
Meriden, CT 06451

DAVE SIROIS
President
CT Licensed Appraiser
dsirois@zoelsauto.com



203-237-6464
Fax: 203-634-4541

www.zoelsauto.com



Find business resources at: www.midstatechamber.com

UPCOMING JUNE EVENTS:

Mark your calendars, iPhones, Droids, etc. with these event dates. **M** = Chamber or Business event; **C** = Community event. More details and RSVP information for these events may be found on www.midstatechamber.com! Chamber event RSVP line: 203.235.7901



This QR code in the upper right corner also brings you right out to our business and community calendars.

This is a SHORT LIST of some of our KEY events – for MORE business and community events including Chamber Committee meetings - details & updates visit...www.midstatechamber.com/Calendar

HELP us GROW: Invite Your Biz Neighbors to JOIN! Earn Chamber BUCKS for you & your biz. 203.235.7901

- C** Thu, Jun 1, Strawberry Shortcake Sale | Meriden Kiwanis Club at Il Monticello. 10am to 6pm | \$6 Homemade Shortcake.
- C** Sat, Jun 3, 7:00 p: 4th Annual Spring Mixer Wine & Vodka Tasting at YMCA Mountain Mist Facility
- C** Sun, Jun 4, 10:00 am: Meriden Lions Club 23rd Annual Duck Race at Meriden Green - visit the Chamber table!
- C** Mon, Jun 5, 11:30 am: Gaylord Golf Classic at Farms Country Club
- C** Tue, Jun 6, 5:30 pm: 32nd Annual Franciscan Sports Banquet and Silent Auction at Aqua Turf Club
- M** **Wed, Jun 7, 10:00 am: The Chamber's 30th Annual Golf Tournament - The Ray Parmentier Classic at Hunter GC | Violi's**
- C** Thu, Jun 8, 11:00 am: 6th Annual One Company Fund South Golf Classic held at Lyman Orchards Golf Club
- C** Thu, Jun 8, 5:30 pm: Jennifer Niland Wright Book Signing held at Augusta Curtis Cultural Center
- M** **Fri, Jun 9, 8:00 am: Business BEFORE Hours – AM Networking at Chamber office. See enclosed flyer.**
- C** Fri, Jun 9, 8:00 am: Connecticut Baptist Homes Annual Big Kahuna Car Wash at CT Baptist Homes
- C** Sun, Jun 11, 2:00 pm: Latin Fiesta on the Green - Pre-Puerto Rican Festival at Meriden Green
- C** Wed, Jun 14, 5:30 pm: Out for Health - "The Escape Room Challenge" at Stone Academy
- M** **Thu, Jun 15, 9:00 am: SCORE - Counseling Sessions for Businesses held at Chamber of Commerce**
- C** Thu, Jun 15, 5:30 pm: Buying Your First Home Workshop, Connex CU, 412 Washington Avenue, No. Haven. RSVP:1.800.CR.UNION
- C** Fri, Jun 16, 7:00 pm: Twilight Summer Music Series Featuring #9 at Meriden Green Amphitheater
- C** Sat, Jun 17: Meriden Historical Society's Summer Fundraiser Tag Sale
- M** **Mon, Jun 19, 2017 Travelers Championship at TPC River Highlands. See enclosed flyer with volunteer information.**
- M** **Wed, Jun 21, 5:00 pm: Business After Hours Hosted by Savers. See enclosed flyer.**
- C** Wed, Jun 21, 5:30 pm: Literacy Volunteers Year-End Celebration at Meriden Public Library
- C** Fri, Jun 23, 7:00 pm: Twilight Summer Music Series Featuring Whiskey, Wine & Coke at Meriden Green Amphitheater
- C** Sat, Jun 24, 8:00 am: Gaylord Gauntlet 5K Trail Run at Gaylord Specialty Healthcare
- C** Sun, Jun 25, 10:30 am: 2nd Annual Record-Journal Best of the Bunch Brunch at Aqua Turf Club
- M** **Tue, Jun 27, 7:30 am: Health & Wellness Breakfast at Gaylord Specialty Healthcare. See enclosed flyer.**
- M** **Wed, Jun 28, 4:30 pm: Ribbon Cutting at Meriden Center | Genesis Healthcare, 845 Paddock Ave., Meriden. Celebrating 35 Years – Cutting is at 5:15 with Mayor Scarpati.**
- C** Fri, Jun 30, 7:00 pm: Twilight Summer Music Series Featuring Middletown Symphony at Meriden Green Amphitheater

And, LIKE us on FACEBOOK and FOLLOW us on TWITTER: @MidstateCoC



Twitter - Follow us : @MidstateCoC



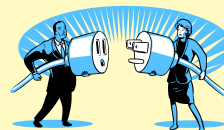
Like us: www.facebook.com/MidstateCoC

Make AMAZING Connections at These Events - Send a Team Member so Your Biz is Represented Don't Miss Out!

COMMITTEE CONNECTION

A LOT of work happens at the committee level here at the Midstate Chamber. We do encourage your involvement and that of your employees on any committee! ALL committee meeting dates and times are listed on the Midstate Chamber's website. Come on out and sit in on a meeting to try it - you will like it: the experience, sharing, connections and more!

Your participation helps YOU, helps YOUR BUSINESS and helps OUR CHAMBER! Questions? Call us at: 203.235.7901



BREAKFAST CLUB TV - The Chamber's Breakfast program is NOW AIRING on Cox Public Access #15 - Frontier: #99 on Mondays at 9:00 p.m. Check the chamber website for details and get your popcorn ready!



Find event photos at: www.midstatechamber.com

JOIN US & BE A PART OF THE TRAVELERS CHAMPIONSHIP

You may know that the Midstate Chamber commands Hole # 12 at the Travelers Championships on Thursday June 22nd AND Sunday June 25th. For the past five years, a number of us have volunteered for the opportunity to get up and close with the PGA talent and to have a great day on the course at the TPC in Cromwell.

The volunteer package includes many perks like golf shirt, hat or visor, grounds admission (even for the days that you don't volunteer) food vouchers for your shifts, parking passes and more.



A special thanks to Hole 12 Captain George McGoldrick, architect extraordinaire, for taking the lead on this fun-raiser. If you might be interested, please let us know as soon as you can so we can get you signed up. Anyone 16 years and older can participate.

GOLF IS BACK

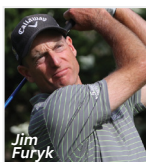
Cromwell, CT, June 19-25



Tickets at travelerschampionship.com



Rory McIlroy



June 19 - 25
TPC
River Highlands
Cromwell, CT



**PAY \$48 & GET \$400+:
VOLUNTEER
WITH THE MIDSTATE
CHAMBER ON:
THU., JUNE 22 and/or
SUN., June 25**

THE HEART OF THE EVENT - Every year more than 4,200 people donate their time and effort to volunteer for the Travelers Championship. By volunteering, you not only get the chance to go behind the scenes at Connecticut's largest sporting event, but you can also feel good about investing your time as the Travelers Championship donates 100% of its net proceeds to more than 100 charities throughout New England. Corporations, community groups, families and individuals are all encouraged to become a part of the 2017 Travelers Championship. Anyone age 16 and older can VOLUNTEER WITH US!

TO REGISTER: VISIT - www.travelerschampionship.com - click on Volunteers - Register - Create Your Account - follow instructions and use code midstate2017 to volunteer with the Midstate Chamber of Commerce!

Be a part of the 2017 Travelers Championship:
Volunteer at Hole# 12

"IT IS A GREAT WAY TO GAIN EXPOSURE TO THE PROFESSIONAL SPORTS INDUSTRY!" AND....For your volunteerism you will receive \$400 worth of goods for under \$50 registration commitment:

2017 Volunteer Package: Value: \$400; Volunteer Package Cost: under \$50 / person
REFUNDS NOT AVAILABLE

The 2017 Travelers Championship Volunteer Package includes:

- ☐ Official Travelers Championship Golf Shirt
- ☐ Official Travelers Championship Hat or Visor
- ☐ One Weekly Volunteer Grounds Admission Badge - use any and every day if you wish & at concerts!
- ☐ One Weekly Guest Grounds Admission Badge - use any and every day if you wish
 - ☐ Lot B Parking Pass, Valid for Each Day of Volunteering
 - ☐ Complimentary Meal for Shift(s) Worked
- ☐ Invitation to Volunteer Appreciation Party and other special events
- ☐ Hartford HealthCare Water Bottle, and Other Great Items!



saversTM
SHOP. REUSE. REIMAGINE.

**Wednesday
June 21, 2017**

5:00 to 7:00 p.m.

495 Chamberlain Hwy., Meriden

Join Savers in Meriden for their very first Business After Hours and learn about who they are, the Savers Cycle, and how they support the community they are in!

Located across the U.S. and Canada, Savers stores redefine the thrift shopping experience, benefit community partners, and have kept more than 650 million pounds of reusable items out of landfills. They call it the Savers Cycle, and it's how they've done business for over 60 years.



**Enjoy Refreshments,
Door Prizes,
Networking, and
Interacting with
Management of the
Store!**



**Please RSVP to this event by calling the Chamber:
203-235-7901, e-mailing: info@midstatechamber.com, or visit
www.midstatechamber.com**

This Business After Hours event is in association with the Midstate Chamber of Commerce to showcase the sponsoring member and to offer both members and members-to-be the opportunity to network and enjoy a wonderful evening.

M.P.C Presents....

Thursday & Friday
Music Happy Hours
 5pm - 7pm @ 
 On the Patio when its nice
 Inside when it rains

June Performers

June 15th	June 16th	June 22nd	June 23rd
			
Tim Longdon	Jason Blazejewski	Tommy O	ArleneWow!

Open 7 days a week
 We have 6 pool tables on the 2nd floor,
 Free Parking in the garage behind the Building ~ After 5 and Weekends.
 Catering and Platters are Available Office Meetings, Office Parties,
 Small or Large Lunch Parties, Grand Openings, Birthday Party and more
39 W Main St ~ Meriden, Connecticut

**NEW MEMBER, Upper Room Christian Center
 Invites you to attend ...**



Upcoming Events



4 June	URCC Member Grand Opening  10:00 AM	 262 Bee St. Meriden, CT	<input type="button" value="RSVP"/>
17 June	URCC Grand Opening  5:00 PM	 262 Bee St. Meriden, CT	<input type="button" value="RSVP"/>

MEMBER UPDATES

This QR code in the upper right corner also brings you right out to our member news section of the website where you can view **FULL** news articles by submission date **OR** by member. Just **SCAN** and **CLICK**!



Find ALL of our members' news online:

<http://www.midstatechamber.com/News>

LOOKING TO GROW YOUR BUSINESS?

We are the only publication that reaches every home in central Connecticut, more than 265,000 readers in print and even more online!

Put Elaine to work for your business today.
Contact Elaine at 203.317.2327
or ejustino@rjmediagroup.com



Call **Elaine Justino**,
your media consultant for the
Record-Journal, Weekly Citizens
and Homebase Digital.

MEDIA THAT MOVES YOUR BUSINESS FORWARD >>

Bongiovanni Insurance and Financial, LLC - The Bongiovanni family would like to invite all chamber members and friends to join them on **September 26th for a 30th anniversary celebration and Business After Hours**. Join us and enjoy networking, refreshments, food, and door prizes as we thank those who have helped us along the way.



CEDF (Community Economic Development Fund) and Citizens Bank are working together to provide you the financial wellness you deserve. **Picture Your Life Beyond Student Debt!** If the idea of lightening student loan payments sounds appealing to you, this unique partnership may be the answer. With over three decades of experience in education finance, Citizens is dedicated to helping you take control of your student loan payments with the Citizens Bank Education Refinance Loan®. If you are approved, you will receive a \$250 reduction of your principal balance at the time of your first payment.* This is a special offer for employees and clients of The Community Economic Development Fund. You can even have your family members take advantage of the offer! With no application, origination or disbursement fees, the Citizens Bank Education Refinance Loan also allows you to potentially:



- **Lower your monthly payment to put more money back in your monthly budget;**
- **Lower your interest rate if you're paying higher rates on old student loans;**
- **Pay your loans off faster: paying less in interest & more toward your principal balance;**
- **Lock in a fixed-rate loan to replace a variable-rate loan so your payment amount is always the same.**

In this way, you can earmark your money for important goals like saving for your business, a new home, retirement, a car or even a trip! For more information and to apply, visit directly at: <https://studentloans.citizensbank.com/lr/YPB> | Select Community Economic Development Fund under the employer tab for your \$250 principle discount. You can also visit

CEDF's newly upgraded website: www.cedf.com

Connex Credit Union - It's always a good thing to put away something for tomorrow. And with Connex's Money Market Special, you can earn up to 1.50% APY* on your nest egg through September 30, 2017. So don't just save for the future. Grow it! Open your account at any branch or call 1-800-CR-UNION. Money Market Account must be opened by June 30, 2017. The Meriden branch is located at 533 S. Broad Street. *Please visit connexcu.org for terms and conditions.



Diversified Physical Therapy is a full service outpatient rehabilitation clinic. **You can choose your therapy provider**, you do not have to go where your Doctor suggests, unless that is what you would like. If you have been to us in the past, you can choose to come see us again. We are focused on the quality of your care and spend one on one time with only physical therapists in a private room. Choose the best care! Take a look at some of the great programs you can take advantage of:

Dynamic Healing Workshop: Saturday June 17th 9am-Noon: Do you do a chakra based healing (reiki or full spectrum)? Want to learn a more dynamic, intuitive healing to add to your table practice? In this half day workshop you will learn how to read energy patterns in the body, practice a dynamic healing, listen and follow your own intuition and have fun. Toni Barillaro and Michelle Thibeault are healers, teachers and masters of play. They each have been doing energy work for over 20 years in many styles and

modalities. Dynamic healing is a chakra based approach to doing energy work. Limited space available. Register by phone 203-630-3939 or email: dpt816@hotmail.com. Cost: \$60 (cash or check)

Crystal Bowl Meditation- Friday June 9th at 5:30pm. Join Michelle for an hour of meditation and relaxation. The soothing tones of crystal bowls can help with pain or just help you get into a deep state of relaxation. Call or email to register: \$20 with registration, \$15 if you bring a new friend and \$25 at the door. Call 203-630-3939 for more information. The next meditation is in September.

There are many ongoing weekly events - call or visit their website: <http://www.diversifiedpt.com/calendar.aspx>



Find community resources at: www.midstatechamber.com

Gallery 53 - "Asylum", a dark suspense saga by local author Kathryn Orzech, recently won the top slot in the Mystery Fiction Category at IPNE 2016 Book Awards. The judging was by a panel of New England librarians. Asylum is set in and around Meriden and Hartford in 1899 and 1974. The novel's fictitious family business was inspired by the author's work experience as a designer at the Napier Company. *Signed copies of Asylum are sold in Meriden exclusively at Gallery 53 located at 53 Colony St., Meriden, CT.* And, Christine Webster, an award winning pastel artist and photographer, is Gallery 53's May Artist of the Month. Chris was an art educator in Meriden for 35 years and a state of Connecticut Teaching Artist. She continues to share her talent teaching classes at the Gallery and adult education in Meriden. Another phase of her artistic journey included many new avenues. In 2013, the Meriden Arts Council chose her as Artist of the Year. In 2012 working with high school students Chris helped in the design and creation of the ornaments for the national tree in Washington D.C. Her current artistic passion is fused glass jewelry and mosaics. Visit Gallery 53 to see a display of her current works. Gallery 53 is located at 53 Colony St., Meriden, CT. Call 203.235.5347 for store summer hours.



Nina's Café has Billiards! Located at 39 W. Main St., Meriden, Nina's Café is open Monday through Friday from 7:00 am - 8:00 pm and Saturday and Sunday from 11:00 am - 8:00 pm. Billiard hours are Monday thru Friday from 4:30 pm - 10:00 pm and Saturday and Sunday from 11:00 am - 11:00 pm. There is free parking in the garage behind the building after 5:00 pm and on the weekends. Nina's can validate your parking during the week for customers for up to 2 hours. Nina's also provides catering and platters for your next office meeting, office party, small or large lunch party, grand openings, birthday parties, etc. For more information call Wajid at 203.235.0593 or visit www.ninascfe.net. **COMING SOON: Acoustic performers on Thursday and Friday nights!**





30th Annual Golf Classic

**Wednesday
June 7, 2017**

Ray Parmentier Memorial
Support Education Awards for area students!

Presenting Sponsor:
PROSHRED SECURITY
DOCUMENT DESTRUCTION AT YOUR DOOR!

See page 8!



On June 21st, United Ways across the country are once again participating in a nationwide "Day of Action."

The Volunteer Center of the United Way of Meriden and Wallingford celebrates this day for a full week!! We are encouraging local companies and groups to serve our communities during our **"Week of Action," which will be held the week of Monday, June 19th – Friday June 23rd, 2017.** The focus this year is, once again, for local companies to respond to this "call to action" by collecting various personal care items/toiletries to help the families that agencies serve. New Opportunities, our community action partner for Meriden and Wallingford, will be the recipient agency.

The following list contains the items that are most needed: Soap, shampoo, combs, deodorant, toilet paper, toothpaste, toothbrushes and feminine hygiene products.

If you interested in being part of this year's Week of Action, please just let us know and many thanks again for ALL that you do!! Contact Diana: United Way of Meriden and Wallingford, (203) 235-4403, ext. 12



Find it all at: www.midstatechamber.com

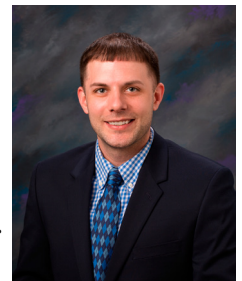
Higher Movement - Open House & Registration : In June we will be holding two Open House & Registration events. These events are a great opportunity for you to come see our space, meet our staff and register for Summer or Fall classes! Our first event will be on Friday, June 9th from 4 pm - 6 pm and our second event will be on Saturday, June 17th from 11 am - 1 pm. Hope to see you there! Please feel free to share these dates with others who may be interested in classes as well!



Ion Bank - Ivan Shiffman, an SBA Preferred Lender, has joined Ion Bank as Vice President of Business Banking. In this role, Ivan will be responsible for commercial loan production, deposit generation, and partner referrals focusing on supporting the borrowing needs of small to mid-size businesses throughout Connecticut with an emphasis on the western and central parts of the state. Prior to joining Ion Bank, Mr. Shiffman was Vice President, Business Banking at Union Savings Bank in Danbury. He is currently an active member of the New Milford, Brookfield, TriBury and Waterbury Chambers of Commerce, New Milford Business.com (local affiliation of successful businesses), a Board Member of the New Milford Economic Development Corporation, and a member of the Southbury Business Association. Ivan is also a Board Member and Immediate Past President of Community Culinary School of NW CT, Treasurer of Temple Sholom of New Milford, a Board Member and Past President of the New Milford Rotary Club, and a Day of Action volunteer at the Southern Litchfield County United Way. He resides in New Milford with his wife, Dawn and their two children.



Ion Insurance Corporation, a full-service independent insurance brokerage affiliated with Ion Bank, has hired Adam Purcaro as an Account Manager. In his new position, Adam will be responsible for sales and service of Ion Insurance products. Mr. Purcaro was previously employed at Street Smart CT in Hamden as an Account Executive, Head of Insurance Agency, and at PFP in Orange, as an Account Manager. Adam is a Management Training graduate of Dale Carnegie of West New England, and is currently pursuing a degree in finance at Naugatuck Valley Community College. He is a Boys Basketball Coach at St. Francis St. Hedwig School, an Assistant Coach for the Union City Little League, and a Youth Basketball Coach at the Naugatuck YMCA. He resides in his hometown of Naugatuck with his wife Crystal, and their daughter Alexis.



Meet The Board of Directors



Dan Quesnel, Vice President of Small Business at Liberty Bank, is the newly elected Secretary of the Board of Directors of the Midstate Chamber of Commerce. Dan has a Bachelor of Science in Economics from Southern Connecticut State University. He understands small business and the fact that the Chamber helps to promote our member businesses, both small and large. Dan was a member of the Chamber's Holiday Business After Hours Committee. He has met some great people at Chamber events. Dan resides in Middletown with his wife, Jackie, and son, Christian.



*** **STAND OUT** ***
WITH AN AD IN THE
2017-18
MAGAZINE



InSight

The Midstate Chamber Magazine

Magazine Ad Options

YES! I LOVE the LOOK of the MAGAZINE and WANT TO RESERVE an AD NOW for the 2017-18 edition! IF YOU ARE DOING BUSINESS IN THIS REGION...YOU MUST BE IN THE MAGAZINE – YOU WILL STAND OUT WITH AN AD – and we've created pricing for every budget.

- Ads will be based on 2 ½ x 2 ½ sized panels of ad space – in virtually any configuration on a page of 12 panels. (3 across and 4 down) The **first panel is only \$290 (early bird)** which is a lower entry price point than previous books.
- BE CREATIVE! SPLIT your ad space – purchase ½ page – 6 panels and have ¼ page in TWO areas! Do the same with an ADVERTORIAL: 3 panel ad with 3 panel info / tip from your business!

Early Bird Specials (commitment and payment) run through December 15, 2016.

YES! Reserve My Space	Popular Sizes	Number of Panels	Regular Price After 12/15	Early Bird By 12/15	Early Bird Saves	
✓	Single Panel	1	\$ 300	\$ 290	\$ 10	Affordable entry ad rate for EVERY business!
	Double H or V	2	535	475	60	
	Quarter Page H	3	770	660	110	
	Third Page H or V	4	1,005	845	160	
	Half Page	6	1,475	1,215	260	
	Two Thirds	8	1,945	1,585	360	
	Inside Full Pages	12	2,885	2,325	560	This allows a full 7.5" x 10" of messaging!
	Full Page I/O Covers	12	3,095	2,495	600	Only 3 prime opportunities – and they INCLUDE a top banner ad on the chamber's web site!

Here are some examples of ad layouts based on panel sizes...AND EARLY BIRD RATES!

Double 5 x 2.5 2 panels \$ 475	Quarter Page 7.5 x 2.5 \$ 660 3 panels	Third Page 2.5 x 10 \$ 845 4 panels	Two Thirds 5 x 10 \$ 1,585 8 Panels
Double 2.5 x 5 2 panels \$ 475	Half Page 7.5 x 5 \$ 1,215 6 panels	Third Page 5 x 5 \$ 845 4 panels	
Single 1 panel 2.5 x 2.5 \$ 290			

THIS MAGAZINE IS THE GO-TO RESOURCE viewed by thousands of people: It is a Chamber Membership Directory, Communities Guide and MORE. This full color Resource Guide is the go-to guide for businesses and residents! A minimum of 5,000 copies (print & digital) are distributed to the Chamber Membership, at Member locations, at special events & in relocation packets. YOUR AD promotes your business / organization AND illustrates your PRIDE in being connected with our central CT region.

EARLY BIRD AD RESERVATION FORM: Make your selections in above grid (✓)

Company: _____ Contact: _____

____ Bill Me (Payment **must be received by December 15th, 2016** to receive the Early Bird Rate!)

____ Check Enclosed or Credit Card - Card # _____

____ Exp. Date: _____ Ver. Code: _____ Zip Code: _____

Submit to: **Midstate Chamber of Commerce, Inc.**, 3 Colony St., Suite 301, Meriden, CT 06451
Ph: 203-235-7901 / Fax: 203-686-0172 / info@midstatechamber.com www.midstatechamber.com





PROMOTION



EDUCATION

NOW is PRIME TIME
to JOIN Midstate Chamber of Commerce.
Kindly SHARE this APPLICATION
with your business associates!



LEADERSHIP



NETWORKING

1-5 Employees	\$280.00
6-10 Employees	\$295.00
11-20 Employees	\$410.00
21-30 Employees	\$525.00



The Midstate Chamber supports, promotes and serves our member businesses in Berlin, Cheshire, Meriden, Southington, Wallingford and throughout central Connecticut.
 3 Colony Street, Suite 301, Meriden, CT 06451
 Ph: 203.235.7901 Fax: 203.686.0172
 info@midstatechamber.com www.midstatechamber.com

Membership Application

Company Name: _____
 Address: _____
 City, State, Zip: _____
 Phone: _____ Fax: _____
 Company Website: _____
 Type of Business/Classification: _____
 # of Owners: ____ # of Employees: ____ Full-Time ____ Part-Time ____ Year Founded: ____
 Contact Person: _____ Contact's Phone: _____
 Contact's E-Mail: _____

How Did You Learn About Us?

Chamber Activity / Interests:

Promotion: ☐ Member Directory Advertising ☐ Web Site Advertising ☐ Chamber Business Expo ☐ Newsletter Advertising ☐ Marketing Committee, etc

Education: ☐ Education Committee ☐ Education Awards ☐ Workshops ☐ School-Business Partnerships ☐ Hispanic Outreach Leaders in Action (HOLA), etc.

Networking: ☐ Business After Hours ☐ Breakfast Club Celebrates ☐ Annual Meeting/Dinner ☐ Annual Golf Tournament ☐ Young Business Leaders of CT ☐ Ambassadors ☐ Membership Committee, etc.

Leadership: ☐ Government & Business Development Committee ☐ Pizza, Pasta, & Politics ☐ Health Insurance, etc

**** Please Include Your "Web Words":** Web Words are a 25-30 word description of your business that appears with your Member Directory listing on www.midstatechamber.com: _____

New member add on – Specials—reserve now and save \$50:

- ☐ \$100 web image (appears next to your web listing making you stand out) - \$150 value
☐ \$100 3 month newsletter ad (business card size) - \$150 value

**** Please E-Mail Your Key Employees Information to info@midstatechamber.com.** Key employees are employees who you wish to receive additional Chamber updates/information and who may be attending events. Key employee information may consist of name, title, direct phone number or extension and e-mail address.

Card# _____ Exp. _____ Card Zip Code _____ Verification Code _____



Signature _____

• **A one-time \$15 dollar set up fee is due at time of application**

Membership dues in this organization may be tax deductible as an ordinary & necessary business expense. Dues paid to this 501c(6) are not a charitable tax deduction. The organization serves as an advocate for and promotes its member businesses.

GOOD NEIGHBOR

As low as 3% down
with no mortgage
insurance*

**Up to 97% Loan to Value with no private mortgage insurance
and below market fixed rate.**

Eligible Properties

1-4 family, owner-occupied dwellings, including FHLMC approved condominiums, located in low-to-moderate income census tracts in the following towns: Ansonia, Derby, East Hartford, Groton, Hartford, Meriden, Middletown, Naugatuck, New Britain, New London, Norwich, Shelton, Wallingford, Waterbury, West Hartford and Windham.

Eligible Transactions

Purchase and refinance transactions. No construction loans. No buy-outs of another party's interest in jointly owned property.

Mortgage Type

Fixed mortgage programs only.

Rate

The then-prevailing mortgage rate will be discounted by .50% on conventional purchases. The rate will be discounted by .25% on conventional refinance.

Closing Cost Credit

\$200 mortgage closing cost credit.

Loan Limit

Program offers single-family borrowers up to \$300,000 with a low down payment.

Mortgage Payments

Must be made electronically from a Liberty Bank account.

Application

At time of application, a fully executed Purchase and Sale Agreement and a valid driver's license must be submitted.

Income Limits

No income limits. Qualifying ratios as high as 45%.

Other Requirements

Minimum credit score as low as 660 required for each borrower. First-time homebuyers are required to complete homebuyer education.

*No mortgage insurance requires a FICO score of at least 700. A FICO score below 700 requires borrower paid mortgage insurance.

MATT NAWROCKI

Liberty Bank

mnawrocki@liberty-bank.com

203-630-6960 • NMLS# 494881



Find your confident place.

All loans subject to credit approval.
Other terms and conditions may apply.
Member FDIC. Equal Housing Lender.  NMLS #459028 EFFECTIVE: MARCH 21, 2017

FOR TRAINING OR REALTOR DISCUSSION PURPOSES ONLY