



PROMOTE AND PROSPECT AT THE 39TH ANNUAL DAFFODIL FEST EXPO



The weekend of **April 29th and 30th** is this year's Daffodil Festival...and it's coming up fast. This event draws **50,000 to 75,000** people over the two day festival and it's the largest audience that you'll find...it is a great usage of your valuable time. While many

of our exhibitors come back year after year, we want you to know that **there is always room in the tent for our Chamber members to exhibit.** Our members have used this event to prospect, to engage and to sell to a crowd they would ordinarily NOT see on a regular working day. **Whether rain or shine, the tent provides the best climate to have a meaningful conversation with a prospect.** Collect some data, qualify some leads and follow up in the upcoming months. Booth rates are very affordable and the leisurely setup option for Friday afternoon has become very popular with the exhibitors...who can get a good night sleep on Friday and arrive on Saturday ready to work. We will again be offering a demo stage for our exhibitors complete with P.A. system with a wireless headset. **Our special guest on Sunday at Noon will be WWE Hall of Famer Bob Backlund.** Do plan to stop by with the family for photo ops and a book signing. And stop by the Chamber Booth as well to say Hello. We will be handing out "Insight" Magazine, our Chamber Membership Directory and Communities Guide, all weekend! This Expo is just one part of the amazing weekend we call the 39th Annual Daffodil Festival...which includes great food, rides, a craft fair, demonstrations, a Saturday parade and a great variety of musical acts and performers. If you have NEVER attended, make this the year you see what you've been missing. Hey, 600,000 daffodils can't be wrong!



In This Issue:



| | |
|-----------------------------|----|
| ► PRESIDENT'S MESSAGE..... | 2 |
| ► CHAIRMAN'S CORNER..... | 2 |
| ► CHAMBER CONTACT INFO..... | 2 |
| ► MEMBER UPDATES..... | 11 |
| ► MEMBER RENEWALS..... | 5 |
| ► NEW MEMBERS..... | 5 |
| ► EVENTS CALENDAR..... | 7 |



INSIDE:

President's Piece: (pg.2)
Annual Dinner Recap
CTNext IP Grant Update

Chairman's Corner (pg.2)

We Call Your Attention to the Flyers inside:

Chamber Expo @ Daffodil
Platt High Uniform Campaign
MidState Medical BAH
YMCA Exploration Station BAH
Reserve: InSight Magazine Ad
30th Annual Golf Tourney
Girls Inc. Benefit Dinner
Child Guidance Clinic Jubilee

NAPIER FOUNDATION HOLISTIC HOUSING GRANT WRAP UP

We recently wrapped up the housing study work made possible with a grant from the James H. Napier Foundation through their Innovation Grant program. *This is the type of work that is important for chambers to do as it creates neighborhood stabilization opportunities for our employees and residents. We like the talent living here.* The "next steps" are to make the findings part of our CT Next Innovation Places project. We want the innovators, creators, inventors and entrepreneurs to live in the central business district. Our downtown properties will offer an excellent proximity to the highly anticipated high speed rail expansion in 2018, we envision more rehabilitated live/work spaces in the district...with amazing connections to New Haven, Hartford, Boston and New York.

While we're "done", the information gathered during this process will be valuable input into the City of Meriden Plan of Conservation and Development. In the mean time, we have created a Housing Page on the Chamber's website in the Resources section. This page contains information about both owner occupied residential resources (including rehab programs) and investment properties as well. Check it out and let us know your thoughts. Again, thanks to the James H. Napier Foundation for the opportunity.

LOTS OF WHAT WE DO FOR MEMBERS IS LINKING YOU ... to resources, services, support, and fellow members. Here are some EASY LINKS to the Midstate Chamber to "always keep you in the loop":

NEWS: <http://www.midstatechamber.com/News> CALENDAR: <http://www.midstatechamber.com/Calendar>
RESOURCES: <http://www.midstatechamber.com/Resources> DIRECTORY: <http://www.midstatechamber.com/Directory>



Séan W. Moore

MESSAGE FROM THE PRESIDENT:

THANK YOU FOR ATTENDING OUR 121ST ANNUAL MEETING

To all of our 300 Chamber members and guests in attendance, **thank you** for a great time on April 4, 2017 at our Chamber's 121st Annual Meeting, Dinner and Silent Auction at the Aqua Turf Club. In speaking on behalf of the staff and volunteer committees who worked tirelessly to produce the event, we'd like you to know how much we appreciate your participation.

We would like to thank our sponsors including the Title Sponsor Record-Journal. Our presenting sponsors were Eversource, FluBlok by Protein Sciences, Suzio Insurance Center Inc., TD Bank and Ulbrich Stainless Steels and Special Metals, Inc.

Our silver sponsors were The Employers Association of the Northeast, ION Bank, Liberty Bank, O & G Industries, Rushford, Updike, Kelly and Spellacy PC and The Workforce Alliance.

And a special thanks to Rico Entertainment Premier Events who served as our photographer for the evening...here is a link to the pictures: <https://ricoentertainment.smugmug.com/4-4-17-MidState-Chamber-Event>

What made the event truly spectacular was the camaraderie, your flexibility, the welcoming spirit, your energy, the connections, the conversations and attention. We think it was the best meeting ever because you all were there.

Feel free to share with your colleagues and associates that this is how we collectively create the spirit of the Midstate Chamber of Commerce.

CTNEXT INNOVATION PLACES GRANT UPDATE



The CTNext Innovation Places Implementation Grant application was successfully submitted on March 31, 2017...a whopping 29 hours ahead of the scheduled deadline! This event wraps up 4 solid months of meetings, discussions, open public forums, training and research. The Chamber, City of Meriden and MEDCO took the lead and engaged over 60 partners in the process. We hired Dr. Drew Harris, professor of entrepreneurial studies at CCSU, as our facilitator and grant writer. We believe that Professor Harris will remain a great resource for the project in the years to come. Together, we have proposed a 3 year plan to foster the entrepreneurial spirit, create education and training programs, and to creatively fill the underutilized spaces in the central business district. We are paying attention to both the "Place" and the "Innovation". I want you all to know that the Innovation Places grant process is a very competitive process and I believe that we have submitted a **FABULOUS** application. It is now up to us to defend the application as we continue the application process through July 1, 2017. If awarded, we anticipate a **BIG** announcement and many more partnerships to be formed. Stay informed and involved as we create our own Innovation Place.

CHAIRMAN'S CORNER



Rich Pendred
A&A Office Systems, Inc.
Chairman of the Board
Midstate Chamber of
Commerce

We just had the 121st Annual Meeting, Dinner, Awards & Silent Auction. There, I addressed the membership and discussed our goals for the year. Our goal is to grow the Chamber to 650 members. We are currently close to 600 dues paying members. In my final year as Chairman we will be pushing toward the 650 goal. Is this realistic?? Of course of it is with your help. Why is important to obtain this goal? What can we do with 650 members?

1. We are growing as a community and the chamber is a part of this.
2. We are fun & do enjoy spending time together. Our story needs to be told.
3. We are a member based organization and with 650 members we can do more. It helps our budget & finances for more programs for ALL members.
4. We'll have a stronger voice with our local and state officials.
5. We'll have larger voice with our schools and universities.
6. We'll have more eyes for YOUR company to market to.
7. We believe "local" doesn't have to mean your town or city. Members are everywhere and there are no borders in business. Many folks live in Wallingford, work in Meriden and vice versa for example.

We need your help to make this goal happen. I know you're all busy and can't squeeze another commitment in. Simply, we ask you to share our information with your clients and friends who are not YET members with us. Our Chamber Staff and volunteers will make the contact and follow up.

We encourage you to get your staff involved. Remember your membership is for all your staff.

There are many events coming up in April. I hope you will be able to join us for just a few. The 39th Annual Daffodil Festival is April 29th -30th. The Midstate Chamber is hosting the commercial expo inside the big white tent next to the pool. We have a few booths still available. Please Contact the Chamber office for more information. We are excited to have WWE Hall of Famer Bob Backlund doing a book signing at the Midstate Chamber booth Sunday the 30th from 12-3pm. Stop by and get his new book and a photo.

Steve Jobs Said: "Great things in business are never done by one person they are done by a team of people." Your that team of people!!! Let's grow again!!

See you at the next event! - Rich Pendred

Questions? Here's How to Reach Us...

This issue of Chamber News is a member service of the Midstate Chamber of Commerce, Inc. with offices located at 3 Colony St., Suite 301, Meriden, CT 06451. You can also visit us on line at www.midstatechamber.com. Ph: 203.235.7901 Fx: 203.686.0172 info@midstatechamber.com. We welcome Chamber member and community news, events and other articles of interest from our diverse membership base. The Midstate Chamber of Commerce serves its member businesses in Meriden, Wallingford, Southington, Berlin, Cheshire and Middletown, Connecticut. We invite all businesses to join with us and become members of our chamber.



For all of your needs visit our members at www.midstatechamber.com



In Partnership With:
The 39th Annual
Daffodil Festival



Business & Community

expo 2017

Saturday, April 29th
and
Sunday, April 30th

Exhibiting Company Information: Please print clearly

| | | | | |
|---|-----|-----|---------------------------------|----------------|
| Name of Presenting Company | | | | Contact Person |
| Mailing Address | | | | |
| City | St | Zip | E-mail Address | |
| Phone | Fax | | Exact Wording for Booth Signage | |
| 1. Please read and complete this application and return to the Midstate Chamber of Commerce with your <i>minimum</i> non-refundable deposit of \$350.00 to reserve your space with payment in FULL before April 21, 2017. 2. Applications must be received by April 3, 2017 to guarantee your space. 3. Your Vendor Packet will be sent prior to the event. | | | | |

Choose your Option Below

REGULAR RATES

- | | |
|---|---------|
| <input type="checkbox"/> Title Sponsor(s) * — See trifold for features | \$4,595 |
| <input type="checkbox"/> Presenting Sponsor(s) * — See trifold for features | \$2,895 |
| <input type="checkbox"/> Saturday & Sunday "Perimeter Prime Booth" * | \$1,195 |
| <input type="checkbox"/> Saturday & Sunday "Interior Prime Booth" * | \$1,095 |
| <input type="checkbox"/> Saturday & Sunday Exhibitor Booth * | \$ 995 |
| <input type="checkbox"/> Saturday Only Exhibitor Booth (10:00 a.m.—6:00 p.m.) | \$ 695 |
| <input type="checkbox"/> Sunday Only Exhibitor Booth (10:00 a.m. —5:00 p.m.) | \$ 495 |

**DON'T MISS this
OPPORTUNITY to EXPOSE
your BUSINESS or
ORGANIZATION to
THOUSANDS that ATTEND the
Daffodil Fest.**

**Sell Your Products
Display a Vehicle
ENGAGE with new customers!**

Electricity is \$35.00 for each 15 amp circuit. Please plan accordingly and bring any extension cords and power strips you may need.

Electricity is available at Perimeter locations only. Please indicate here the equipment requiring electricity: # of Outlet(s) x \$35 = _____

TOTAL Amount Due including Exhibitor Booth & Electricity \$ _____

* All Saturday exhibitors can take advantage of a leisurely set-up on Friday afternoon from 2:30 p.m. to 6:30 p.m.

This will allow exhibitors to set up during normal working hours, go home and get rested and come back on Saturday ready to greet the crowds!

☐ Yes ☐ No **We will be setting up on Friday Afternoon**

Regular Daffodil Festival EXPO Hours: Saturday—10 a.m. to 6 p.m. (Daffodil Festival closes at 9 p.m.) and Sunday—10 a.m. to 5 p.m.

All booths will be 8' (Deep) x 10' (Wide) with: 3' High Flameproof Draped Side Rails, 6' Skirted Display Table, 8' High Flameproof Back Wall Drape, 2 chairs, Exhibitor ID Signage. Additional items may be contracted through the pipe and drape vendor.

Please indicate what you will be exhibiting at your space.

Presenting: _____

Please return this reservation form with your payment or deposit to: The Midstate Chamber of Commerce, Inc.

3 Colony St., Suite 301, Meriden, CT 06451 info@midstatechamber.com 203-235-7901 / fax 203-686-0172 www.midstatechamber.com

ACCEPTANCE: I agree to abide by all guidelines, specification, rules and regulations governing the Midstate Chamber of Commerce and to the terms and conditions of payment. All cancellations must be in writing by April 1, 2017. All initial deposits are non-refundable. Please sign below.

| | | |
|---|------------------------|---------------------------|
| Signature: | Title | Date |
| Printed Name of Signer | Company Name | |
| <input type="checkbox"/> Bill us <input type="checkbox"/> Credit Card (AX, Disc., VISA, MC) # _____ | | |
| Exp. Date: _____ | Zip Code of Card _____ | Card Verification # _____ |

Visit www.midstatechamber.com or www.daffodilfest.com for more details about the 2017 Festival!





Business & Community Expo 2017

Saturday, April 29th
and
Sunday, April 30th

Central Connecticut's Largest Exhibit of Area Businesses!!

With an audience of 50,000+ ...
This is **THE PLACE** for Maximum Exposure
for your Business
Up to 65 Exhibitors Under One Tent
Expo in 2017 is 2 DAYS! Friday Setup
only + exhibit on Saturday and Sunday



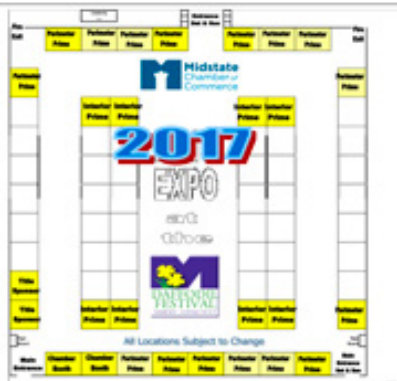
WHY YOU SHOULD EXHIBIT:

- Sell Your Product
- Gain Maximum Exposure
- Make Valuable Connections
- Increase Market Share & Visibility
- Expand Your Contact Base



This event offers outstanding exposure in a unique venue and is a fun filled weekend for all! That's why we've created
OPTIONS FOR EVERY BUDGET: from \$495 to \$4,595

**Sponsorships
and
Prime Spots
Offer GREAT
Visibility &
Valuable
Promotion!!**



Register Early Prime Spots SOLD OUT in 2016!

2016 EXPO Hours of Operation

- If you plan to exhibit on Saturday, you are eligible to take advantage of Friday afternoon setup from 2:30 p.m. to 6:30 p.m.
- Saturday, April 29 from 10 a.m. to 6 p.m. (the Festival activities continue until 9:30 p.m.)
- Sunday, April 30 from 10 a.m. to 5 p.m.

See reverse and brochure for more information and application.

WE DO OUR BEST TO MAKE THIS AN ENJOYABLE EVENT FOR ALL OF OUR VENDORS...EXHIBITING IS EASY:

- ALL Exhibits are located inside a 100' x 120' enclosed tent on the tennis courts—so all exhibits are out of the elements and off the dirt ground.
- Electricity is available on the perimeter of the tent.
- The tent is secured by Security Guards and assisted by Mule Security Systems during the off hours on Friday and Saturday evenings so exhibits are not tampered with and items do not have to be brought back and forth daily.
- Prime spaces are located near entrances and at the end of aisles. Perimeter Prime have access to electricity; Interior Prime locations do not.
- Expo Sponsors receive additional "perks" such as company name on bags distributed from the chamber booth throughout the weekend, prime space, special sponsor signage, and more.
- Reservations for all Expo locations are required by March 1, 2017 to guarantee accurate signage & booth placement. Booths must be staffed at all times for maximum prospect interaction. Electricity availability cannot be guaranteed with reservations placed after March 1, 2017.
- Parking IS allowed in the Park on Friday ONLY. If setting up your exhibit on Saturday or Sunday, you may enter the Park between 7:00 a.m. and 9:00 a.m. All vehicles must be out of the park by 9:00 a.m. For Saturday and Sunday, vendors are shuttled in after your exhibit is set-up. Easy, Convenient Shuttle Transportation begins running continuously at 8:00 a.m. and continues until 9:00 p.m. on Saturday and 5:00 p.m. on Sunday.

MEMBER RENEWALS...

We *recognize and thank* our members who have joined or renewed their investment in the Midstate Chamber within the last month.

Visit www.midstatechamber.com for the most up-to-date membership listing!

American Job Center Network
ARC of Meriden - Wallingford
Dailey Professional Counseling Services LLC
Fairfield Inn by Marriott
Fresenius Kidney Care
ImageFIRST Healthcare Laundry
International UOE Local 478
Joy Unlimited Ministries International
LeafFilter North of Connecticut, Inc.
Lupacchino Financial & Associates
Macri Roofing, Inc.
Mathieu Memorials
Meriden Wallingford Chrysalis, Inc.
Miller Memorial Community
Outfront Media
Rico Entertainment Premier Events
Robert's Chrysler, Inc.
Seward & Monde
Stone Academy
Westbrook Lobster Restaurant & Fish Market
Westfield Property Group
Wheeler Clinic, Inc.

Members Use Members!

ZOEL'S BODY & AUTO
CENTER

"Collision Specialists & Full Auto Service"

19 Hall Ave.
Meriden, CT 06451

DAVE SIROIS
President

CT Licensed Appraiser
dsirois@zoelsauto.com



Approved
Auto Repair

203-237-6464

Fax: 203-634-4541

www.zoelsauto.com

Welcome
NEW MEMBERS!

We are delighted to introduce our new members - the lifeblood of our organization and the reason we exist. Please welcome them by visiting their website, sending them an email or stopping by to introduce yourself. The personal touch will help our chamber continue to grow and thrive as we continue on our goal to reach 650 members in the coming months!

A membership application is enclosed - SHARE it with a friend ... don't keep us a secret!

As U Like It Cleaners: 467 Broad St., Meriden, CT 06450. The phone number is 203.634.7775 and the fax number is 203.634.3012. Mark Lucibello is the primary contact. For over 55 years, As U Like It Cleaners has offered quality full service dry cleaning with same day service available Monday through Friday til 9:00 am. Thank you to Kerry Johnson of Travel by Kerry for inviting Mark to join the Chamber!

Covoda Communications, Inc: 36 Green Hill Lane, Cheshire, CT 06410. The phone number is 203.699.9451 and the fax number is 203.672.0254. Shawn Deakin is the primary contact. Covoda Communications, Inc is a full-service communications company providing an array of cloud-based, voice, & data services to businesses in our local communities.

CW12 - Construction Workforce Initiative 2: 547 Center St., Meriden, CT 06450. The phone number is 203.891.6897. Nicole Jefferson is the primary contact. CW12 is a workforce development organization with standardized contract compliance and prevailing wage services. Thank you Ed Siebert from the Meriden Housing Authority for inviting Nicole to join the Chamber!

Durants Party Rentals: 20 Putnam Place, Cheshire, CT 06410. The phone number is 203.250.6600. Jackie Tiso is the primary contact. Durants Party Rentals carries tents & party rental equipment for all occasions including catering equipment for rent or purchase and they are a full service florist.

Ferraro's Market: 211 S. Broad St., Meriden, CT 06450. The phone number is 203.440.0086. Peter Ferraro is the primary contact.

Once Upon A Farm: 200 Litchfield Turnpike, Bethany, CT 06524. The phone number is 203.393.0268. Pam Adams is the primary contact. Once Upon a Farm, an affiliate of Institute of Professional Practice, provides educational, agricultural, therapeutic, volunteer and employment opportunities to people with special needs.

Pancheros Mexican Grill: 893 N. Colony Rd., Wallingford, CT 06492. The phone number is 203.265.7778. Robert Mesite is the primary contact. Pancheros Mexican Grill is a fast casual Mexican franchise known for delicious better-built burritos, freshly pressed tortillas, only the finest ingredients, and more including quesadillas, tacos, burrito bowls, and salad. "Viva la Bob" Inquire within!

WFSB: 333 Capital Blvd., Rocky Hill, CT 06067. The phone number is 860.728.333 and the fax number is 860.728.5667. Bill Whittle is the primary contact. Thank you to Edward Zavaski of SIG for inviting Bill to join the Chamber!

Don't Keep Us a Secret: Kindly SHARE the enclosed membership application with your friends in business & invite them to join or attend an event with you!



Business After Hours



**Thursday
April 20, 2017**

5:30 to 7:00 p.m.

Emergency Department 435 Lewis Ave., Meriden



MidState Medical Center invites all Chamber members to learn about and tour their new Fast Track within the Emergency Department (ED). Patients talked and MidState listened. Fast Track is designed so patients with minor illnesses or injuries can be seen, treated, and released quickly. Open from 9 a.m. to midnight every day, in a separate section of the ED, Fast Track cares for patients with cuts, sprains, strains, back pain, respiratory infections, sore throat, ear aches, work-related injuries, fever in young children, and more.

Enjoy Networking, Refreshments, Tours, and more!

Please RSVP to this event by calling the Chamber:
203-235-7901, e-mailing: info@midstatechamber.com, or visit
www.midstatechamber.com

This Business After Hours event is in association with the Midstate Chamber of Commerce to showcase the sponsoring member and to offer both members and members-to-be the opportunity to network and enjoy a wonderful evening.

UPCOMING APRIL EVENTS:

Mark your calendars, iPhones, Droids, etc. with these event dates. **M** = Chamber or Business event; **C** = Community event. More details and RSVP information for these events may be found on www.midstatechamber.com! Chamber event RSVP line: 203.235.7901



This QR code in the upper right corner also brings you right out to our business and community calendars.

This is a SHORT LIST of some of our KEY events – for MORE business and community events including Chamber Committee meetings - details & updates visit...www.midstatechamber.com/Calendar

M HELP us GROW in 2017: NEW MEMBER Campaign: Earn Chamber BUCK\$ for you & your biz. 203.235.7901

- M** Thu, Apr 13, 9:00 am: **SCORE - Counseling Sessions for Businesses** at Chamber of Commerce. Call today for your free 1-hour confidential consultation with a SCORE Consultant.
- C** Thu, Apr 13, 12:30 pm: Construction Workforce Initiative 2 Open House at 547 Center St, Meriden.
- C** Wed, Apr 19, 12:00 pm: OPEN HOUSE at Women & Families Center, 169 Colony St., Meriden: learn more about services and resources during Sexual Assault Awareness Month.
- M** Thu, Apr 20, 5:30 pm: Note special time for the COMBO **Business After Hours Featuring MidState Medical Center FAST TRACK Emergency Department**. See enclosed flyer.
- M** Fri, Apr 21: **EARLY BIRD DEADLINE** for 30th Annual Midstate Chamber Golf Tourney
- M** Fri, Apr 21, 8:30am: **12th Annual Women in Business Summit** - Unstoppable, www.wibsummit.com.
- M** Tue, Apr 25, 8:00am: **Chamber Education Committee Learning Walk at Maloney H.S.** - Register TODAY: 203.235.7901
- C** Fri, Apr 28: Joy Unlimited Ministries Int'l Church Anniversary Celebration 2017.
- M** Sat, Apr 29 & Sun Apr 30: **Chamber's 2017 Business Expo held in conjunction with the 39th Annual Meriden Daffodil Festival** at Hubbard Park. See enclosed flyer. Still some space available for your business or organization to get EXPOSED to thousands of potential new customers. Sat. the Expo tent is open 10a – 6p and Sun. from 10a-5p. WWE Hall of Fame Wrestler Bob Backlund is scheduled from noon - 3p on Sun.
- M** Mon, May 22, 5:00 pm: **SAVE THE DATE** for a special ShopLocal presentation at Midstate Chamber - Free for ALL small businesses to attend!

And, LIKE us on FACEBOOK and FOLLOW us on TWITTER: @MidstateCoC



Twitter - Follow us : @MidstateCoC



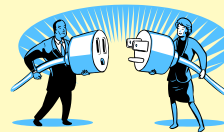
Like us: www.facebook.com/MidstateCoC

**Make AMAZING Connections at These Events - Send a Team Member so Your Biz is Represented
Don't Miss Out!**

COMMITTEE CONNECTION

A LOT of work happens at the committee level here at the Midstate Chamber. We do encourage your involvement and that of your employees on any committee! ALL committee meeting dates and times are listed on the Midstate Chamber's website. Come on out and sit in on a meeting to try it - you will like it: the experience, sharing, connections and more!

**Your participation helps YOU, helps YOUR
BUSINESS and helps OUR CHAMBER! Questions?
Call us at: 203.235.7901**



BREAKFAST CLUB TV - The Chamber's Breakfast program is NOW AIRING on Cox Public Access #15 - Frontier: #99 on **Mondays at 9:00 p.m.** Check the chamber website for details and get your popcorn ready!



Find event photos at: www.midstatechamber.com

Don't Miss the 30th Annual Golf Tourney!

Golf Player Registration

Team Contact: _____

Phone: _____

Email: _____

Players:

1.) Name: _____

Company: _____

Handicap: _____ Email: _____

2.) Name: _____

Company: _____

Handicap: _____ Email: _____

3.) Name: _____

Company: _____

Handicap: _____ Email: _____

4.) Name: _____

Company: _____

Handicap: _____ Email: _____

Please see reverse side for more information.
Please return both sides to us for processing.
Please return to:

Midstate Chamber of Commerce
3 Colony St., Suite 301, Meriden, CT 06451

Phone: 203-235-7901 / Fax: 203-686-0172
E-Mail: info@midstatechamber.com

This tournament benefits Chamber activities including the Sanford S. Shorr Education Awards. To date, over \$100,000 has been awarded to deserving area students!

Tournament Schedule

10:00 a.m. - Registration, Free Range Balls & Putting Contest
10:30 a.m. - Barbecue Lunch
Noon - Shotgun Start, Scramble Format
5:00 p.m. - Cocktail Reception, Cash Bar
6:00 p.m. - Awards, Dinner & Prizes

Spectacular Prizes:
Putting Contest Cash Prize
Over \$5,000 in Raffle Prizes!

Register
EARLY



SELLOUT
IS
Expected

* Early Bird Payments Must be Received by April 21st

www.midstatechamber.com



Wednesday
June 7, 2017

Ray Parmentier Memorial



Presenting Sponsor:



Hunter Golf Club

and

Violi's Restaurant

688 Westfield Road, Meriden, CT

Golf Registration Fee Includes:

- TWO flights = more chances to WIN! EIGHT TEAM Prizes are awarded!
- Eighteen holes of golf
- Golf cart
- Registration goody bag
- FREE Range Balls on Driving Range (10 - 11:45am)
- Barbecue lunch, buffet dinner
- Fantastic raffle prizes & awards
- Many opportunities for prizes!

Foursome Only: \$775 / \$750 Early Bird*

Individual Players: \$195 per player

Dinner Only / Awards Ceremony: \$60

Program Book Print Ads:

Full Page (10" x 7.5" wide): \$175
Half Page (5" x 7.5" wide): \$125
Quarter Page (5" x 3.75" wide): \$75
Business Card Size: \$50
Inside Front & Back Covers: \$250



Team Hyundai 2016 Boardman Cup Champs with Golf Chairwoman Linda Krampitz



A SELL OUT is Expected
*Early Bird Payments Must be Received by April 21st

Sponsorship Opportunities

Diamond Sponsors: \$1,400 / \$1,300 Early Bird*

Includes foursome, special gift for golfers, tee sign, pin flag, full page ad in the program book & recognition at dinner.

Gold Sponsors: \$1000 / \$900 Early Bird*

Includes foursome, tee sign, half page ad in the program book & recognition at dinner. Add a Pin Flag for just \$75.

Silver Sponsors: \$600 / \$525 Early Bird*

Includes twosome, tee sign, quarter page ad in the program book.

Veteran's Sponsorship: Cannot participate? But we offer valuable exposure and promotion for your business? Sponsor a single Veteran or team as listed above, receive that package's perks plus special recognition in the program and during dinner and we find veterans to fill your player slots! A win-win for ALL.

Hole-In-One Sponsor -

Golf Ball Sponsor -

Carts Sponsor -



Exclusive Putting Contest -

Winner wins 50/50 Cash Prize!



Beer Sponsor:

\$500

1/4 page ad in program & signage on course & at dinner

Lunch Sponsor - 3 Available:

\$300

Your banner (provided by sponsor) displayed in lunch area & quarter page ad in program book.

Cocktail Hour:

\$250

1/4 page ad in program book & your banner in dinner tent. Several available.

NEW On-Course Experience:

\$250

Sponsors may set up a table and/or tent on course with your company's give-aways for the golfers.

Pin Flag:

\$200

Eighteen flags available with business name embroidered on flag. Sponsor keeps flag!

Tee Sign: Full color name/logo on canvas sign.

\$150

Longest Drive: Name or logo on sign

\$100

Closest to the Line: Name or logo on sign

\$100

Closest to the Pin:

\$100

Four holes available with name or logo on a sign.

Golf Sponsor Registration

Company Name: _____

Contact: _____

Phone: _____

E-Mail: _____

Sponsorship Level: _____

☐ Sponsor a Veteran (sponsorship or single player)

☐ Program Ad: (Size?) _____

☐ Putting Contest - Exclusive _____

☐ Lunch Sponsor - Exclusive _____

☐ Cocktail Hour _____

☐ On-Course Experience _____

☐ Pin Flag _____

☐ Tee Sign _____

☐ Longest Drive _____

☐ Closest to the Line _____

☐ Closest to the Pin _____

☐ Dinner Only _____

Total Amount: \$ _____

☐ Bill Us _____

☐ Charge (VISA, MC, Disc., American Express)

CC# _____

Expiration Date: _____

Verification # _____

Zip Code associated with card: _____

Signature: _____

Please return to:



3 Colony St., Suite 301,
Meriden, CT 06451

Phone: 203-235-7901 / Fax: 203-686-0172
E-Mail: info@midstatechamber.com





Thursday, May 4, 2017

5:00 to 7:00 p.m.

Exploration Station 6 South Grove St. Meriden

The Meriden YMCA invites all Chamber members and their staff to join them as they introduce their Exploration Station! This building has been completely transformed into a children's play area. This venue is used by the Meriden YMCA child care programs and members including free play time for their member families on Friday nights as well as for birthday parties and group outings by local programs.



To learn more visit www.meridenymca.org or call them at 203.235.6386.

***Enjoy Networking,
Refreshments, Door
Prizes, and more!***



**Please RSVP to this event by calling the Chamber:
203-235-7901, e-mailing: info@midstatechamber.com, or visit
www.midstatechamber.com**

This Business After Hours event is in association with the Midstate Chamber of Commerce to showcase the sponsoring member and to offer both members and members-to-be the opportunity to network and enjoy a wonderful evening.



MEMBER UPDATES

This QR code in the upper right corner also brings you right out to our member news section of the website where you can view FULL news articles by submission date OR by member. Just SCAN and CLICK!



Find ALL of our members' news online:

<http://www.midstatechamber.com/News>

Community Economic Development Fund (CEDF)

is pleased to unveil their brand new website. The new site has improvements to better serve Connecticut's Small Businesses. The site is easy to navigate, contains information on services, contains great referral information, convenient class registration and payment, contains Podcasts & Auto Seminars, contains up-to-date happenings with CEDF & clients, has testimonials of clients, has simple translation into any language and so much more. Find their new site here: www.cedf.com. CEDF hopes that you like the improvements. After you view the new site, we would appreciate it if you could share the site with others and let us know your thoughts and ideas by e-mailing Nancy Gray at n.gray@cedf.com.



Connex Credit Union - Improve Your Life With a Little Help with from Your Home and the Unbank: Remodel your bathroom, pay for college, cover large expenses or more with a Connex Credit Union home equity loan or home equity line of credit. Rates as low as 3.49% APR* for a home equity loan, and as low as 4.00% APR* for a home equity line of credit. Must apply online at connexcu.org (see terms and conditions), by phone at 1-800-CR-UNION, or in a branch by April 30, 2017. Let our Financial Advocates find the right loan for you! Visit the team at the Meriden office in Townline Plaza: 533 S. Broad Street, Meriden.



Friends of the Meriden Public Library will be holding a \$5-a-bag booksale in their bookstore at the Meriden Public Library, 105 Miller St., Meriden from April 17th through April 22nd. The Bookstore hours are Monday through Wednesday and Friday from 10am to 4pm and on Thursday from 10am to 8pm and Saturday from 10am to 1pm. Bags will be provided.

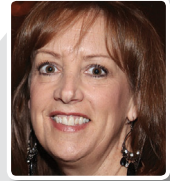


Gallery 53 can host your next Girls Night Out with a Paint Party. Book a fun night for a group of 8 or more. You can choose to paint on either canvas or wine glasses. For more information or to book your Girls Night Paint Party, call 203.235.5347. Gallery 53 is located at 53 Colony St., Meriden and offers paint parties for children's birthday parties for groups of 8 or more. Dates on Saturday's & Sunday's are available. Volunteers are provided so that Mom can relax or join in on the fun!

LOOKING TO GROW YOUR BUSINESS?

We are the only publication that reaches every home in central Connecticut, more than 265,000 readers in print and even more online!

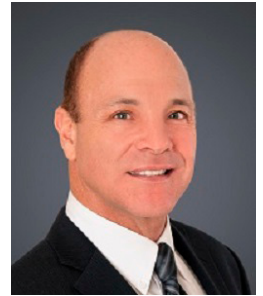
Put Elaine to work for your business today. Contact Elaine at 203.317.2327 or ejustino@rjmediagroup.com



Call **Elaine Justino**, your media consultant for the Record-Journal, Weekly Citizens and Homebase Digital.

MEDIA THAT MOVES YOUR BUSINESS FORWARD >>

Home Store Real Estate recently celebrated its 9th anniversary, announced Joe Criscuolo, owner/broker. Besides Criscuolo, other Home Store Realtors are Veronica Leventhal, Robert Lunney, Jr., Nicole Cammack and Karen J. Carabetta. 2016 was another fantastic year. Repeat clients and referrals have been our best source of business which continues to grow year after year.



- In December the Fed raised the benchmark interest rate by .5% with 3 more predicted for 2017.
- Prices of single family homes seem to have stabilized even though property assessments recently dropped in many towns.
- The average group of purchasers seems to be in the late 20's and 30's.
- Sales of multi family homes continue to increase.
- Condo sales are on the flat side which creates an excellent buying opportunity for first time buyers or retirees.
- On the selling side, there aren't many people trading up. Several senior homeowners are continuing their exodus to States with a lower cost of living.

The Home Store has the resources and staff to cover most of Connecticut. Joe achieved 48 of his own transactions in 2016 and with 103 in the past 2 years. He is ranked among the top 5% of Realtors in the State. Joe is a former recipient of the "Connecticut Realtor of the Year" award and has received the "Five Star Real Estate Agent Award" 7 years in a row by Connecticut Magazine. Criscuolo has a long list of appointments and awards dating back to 1975. He is very active in his local community and currently serves as an Ambassador and past director for the Midstate Chamber of Commerce. Joe is also a Residential Certified Appraiser who owns and operates Advantage Appraisal Company. The Home Store Real Estate and Advantage Appraisal Company are located at 25 Tammy Hill Road in Wallingford, Connecticut 06492. Visit their web site at www.thehomestoreRE.com for valuable real estate information and where prospective purchasers can sign up to receive automatic MLS listings. They can be reached at 203-631-2955 or 203-284-9164.



Find community resources at: www.midstatechamber.com

Cardinal Engineering Associates, Inc. : Shortly after its inception in 1962, the founding partners of Cardinal Engineering Associates, joined by a bare-bones support staff, relocated its start-up operation from Waterbury to Colony Street in Meriden. Still presiding after 55 years, founding partner and President Joseph A. Cermola, Jr. has thoughtfully grown his civil engineering firm, one of the longest-running downtown Meriden firms, into today's 25-person operation, including three generations of the Cermola family.



A registered professional engineer and licensed land surveyor in Connecticut, Cermola has served in many significant capacities throughout the course of his career. He is the present Vice Chair of the South Central Connecticut Regional Water Authority Board, and remains involved with the National Society of Professional Engineers, Connecticut Society of Civil Engineers, and the Connecticut Association of Street and Highway Officials. He was a member of the State Board of Examiners for Professional Engineers and Land Surveyors from 1976 to 1995, and Chairman from 1979-1995.

All the indicators of a successful family business are in place at Cardinal. With a steadfast focus on developing long term relationships by exceeding client expectations, the business is thriving decades since its inception. Cardinal is defying considerable odds, as statistics demonstrate 70% of family-owned businesses fail or sell before the next generation takes control. Only a fraction of the surviving 30% are successfully run by the third generation.

The backbone of Cardinal is its second generation. This team includes Vice President Joseph Cermola, III; Director of Survey Services Bernard J. Cermola; and Director of Business Development Timothy M. Cermola. The third generation hoping to carry on the family business is comprised of Survey Party Chief and CAD Designer Matthew Cermola (Joseph's son) and Michael Cermola (Bernard's son). Michael is currently studying Civil Engineering at Central Connecticut State University and supporting the survey team during college breaks.

Cardinal has an extensive portfolio of infrastructure design and construction inspection work throughout the State of Connecticut. Compliance with the Clean Water Act of the 1970s had Cardinal on the front lines in New Haven and Middletown, designing the separation of antiquated combined sewer systems in both cities to eliminate sewer overflows and to reduce pollution of the Connecticut River and the Long Island Sound. This work has been on-going for over 30 years.

Over the past ten years, Cardinal has been responsible for over 40 miles of roadway reconstruction throughout Connecticut. In 2016, the firm expanded its Meriden headquarters to accommodate its growing Bridge Department which has been tasked with the design of over 20 municipal bridges in the past few years alone. Current rehabilitation and replacement projects are underway in Litchfield, Orange, Suffield, Rocky Hill, Berlin, Shelton and Cromwell.

Cardinal continues to provide engineering services for a wide variety of infrastructure projects in municipalities throughout in Central Connecticut. In addition to the on-going bridge projects mentioned above, Cardinal is completing a town-wide sanitary sewer infiltration and inflow study in Cromwell. In Middletown, Cardinal is providing construction engineering services for the City's Regional Pump Station project. Various sanitary sewer rehabilitation projects are underway in both Cromwell and Middletown, as well as Berlin.

"Our downtown location has definitely been one of the keys to our success. In Meriden, we have easy access to the interstates and Route 15 which allows us get to virtually any of Connecticut's 169 towns and cities in under an hour. We're also not far from the Department of Transportation. This puts us in a great position to deliver on our promise of responsive service," describes Director of Business Development Timothy Cermola.

In addition to a long list of municipal clients, Cardinal serves the Connecticut Department of Transportation. The firm recently completed the design of the \$25 million rehabilitation of Connecticut's longest bridge - the Gold Star Memorial Bridge (I-95 Southbound) in Groton/New London - which spans over 6,000 ft. Construction is scheduled to commence this spring.

On April 1st, the firm opened its first satellite office in Litchfield to accommodate an increased workload in the northwest region of the state. On-going Litchfield projects include the White Woods Road, North Shore Road and Milton Road bridges. Other recent assignments include the Flats Rocks Road Bridge in Cornwall, the West Road Bridge in Winchester, the Spring Hill Road Bridge in Washington, and a newly awarded contract with the Northwest Hills Council of Governments as a prequalified on-call engineer for member municipalities.

Cardinal Engineering Associates is a family-owned and operated multi-disciplined consulting civil engineering firm, specializing in providing surveying, design and construction engineering services to municipalities and State agencies for a wide variety of public infrastructure projects including transportation, water resources, water and wastewater, and site development projects. Visit their website: www.cardinal-engineering.com.



TRANSPORTATION,
STORMWATER, WASTEWATER,
CONSTRUCTION ENGINEERING SERVICES,
LAND SURVEYING

3 Colony Street, Meriden CT, 06451 • 203-238-1969
457 Bantam Rd., Litchfield CT 06759 • www.cardinal-engineering.com

Excellence in engineering since 1962



Find it all at: www.midstatechamber.com



The Ion Bank Foundation has awarded a \$5,000 grant to Columbus House for the Wallingford Emergency Shelter Program. This program operates as part of the Middlesex-Meriden-Wallingford Coordinated Access Network (CAN), an inter-agency collaborative that enables shelters, housing agencies, and other social service providers to

communicate and coordinate services. People experiencing homelessness are connected to the broad array of services available including supportive housing, financial assistance, employment services, benefits counseling, substance abuse recovery, and mental health services. For each family and individual, the goal is housing stability and personal prosperity. Charles J. Boulrier III, President & CEO of Ion Bank and the Ion Bank Foundation said "it gives us great pleasure to assist Columbus House in their efforts to provide community health and social services through the Wallingford Emergency Shelter to the citizens of our communities". In other news, Ion Bank has announced the following:

- **Donna DiMichele** has been named Assistant Vice President, Mortgage Originator. Ms. DiMichele, who joined Ion Bank in 2008, was previously a Mortgage Originator at American Savings Bank. A graduate of Chamberlain College in Boston, Massachusetts, Donna currently resides in Wolcott.

- **Diane Dornfried** has been named Assistant Vice President, Mortgage Originator. Ms. Dornfried has been an Ion Bank employee since 2010, having previously worked for McCue Mortgage Company as a Mortgage Originator. Donna is a graduate of Quinnipiac University with a B.A. in English, and is an active member of the Berlin Lions Club. Ms. Dornfried is a life-long resident of the Kensington section of Berlin.

- **Sherrie Krawczyk** has been named Assistant Vice President, Mortgage Originator. Ms. Krawczyk, who joined Ion Bank in 2014, was previously employed at Simsbury Bank as a Mortgage Loan Officer. Sherrie is an active member of the Greater Valley Chamber of Commerce. She is a native of Southington, and currently resides in Bristol.



left to right - Jeffrey Hernandez, Wallingford Branch Manager; David Drescher, President & CEO of Ion Insurance; Charles J. Boulrier III, President & CEO of Ion Bank and the Ion Bank Foundation; Alison Cunningham, CEO of Columbus House, and William Dickinson, Mayor of Wallingford

Literacy Volunteers - Meriden / Wallingford

MERIDEN
SCRABBLE
CHALLENGE

Attention all lovers of words, reading, and Scrabble! You can support Literacy Volunteers by sponsoring, advertising, or sending a team to compete in the Scrabble Challenge,

Wednesday May 3rd, at the **Four Points by Sheraton-Meriden**. Proceeds will support adult literacy programs in Meriden and Wallingford. Call 203-235-1714 for details or visit www.lvaghn.org and then click on Scrabble. Be part of the fun and friendly competition while supporting an important program that improves lives in your community.

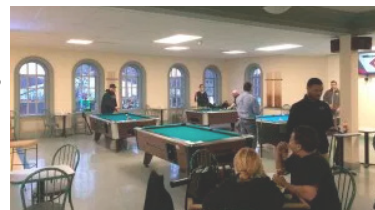
Meriden Historical Society

invites all to an Open House at the Andrews Homestead for a special exhibit of "Meriden and the Nation's Wars". *The Andrews Homestead, the Historical Society's Museum, will be open every Sunday in May from 11:00 am to 3:00 pm. Admission is free. Donations are greatly appreciated.* The Andrews Homestead is located at 424 West Main St., Meriden.



Nina's Café,

located at 39 West Main Street, Meriden is pleased to announce that they have expanded their hours AND also now offer billiards! Nina's Café Hours are Monday to Friday 7:00 am to 9:00 pm and Saturday and Sunday 11:00 am to 9:00pm. Nina's has a diverse menu, offering breakfast, lunch and dinner options, including classic Mediterranean fare like gyros and falafel. They also have sandwiches, burgers, salads and more. Seven pool tables are upstairs - Billiard Hours are Monday to Friday 3:30 pm to 11:00pm and Saturday and Sunday 11:00 am to 11:00pm. You'll find plenty of Free Parking in the garage behind the building after 5 and on weekends. Also, they will validate parking during the week for our customers up to 2 hours. Don't forget Nina's is available for catering and platters too for Office Meetings, Office Parties, Birthday Parties, Small or Large. Visit Ninascafe.net or on Facebook at Nina's Café. (203) 235-0593.



Masonicare Home Health & Hospice



invites all caregivers to participate in our SHARE support group. These groups are specially designed

to engage conversations and help process feelings in a safe and supportive environment. Starting March 21 and continuing the 3rd Tuesday of each month from 10:00 - 11:00 a.m. This group will meet at the Masonicare Health Center (Boardroom-1st floor), 22 Masonic Ave., Wallingford, and will be facilitated by Fran Goldberg-Cohen, LCSW. For more information, please call 203-679-5337.



O&G Industries Vice-President **Kara Oneglia** was named as the Inaugural Best Supporting Woman in the Role of Business by the Northwest Connecticut United Way's Women's Leadership Initiative Committee. Kara is a fourth generation member of O&G's leadership team and manages all aspects of the company's Masonry division including its Beacon Falls Fabrication Center and seven Connecticut-based retail locations.

Since Kara took over leadership of the division in 2012, O&G has grown to become one of the largest suppliers of masonry products and services in New England. A formal presentation of the award will be made at the Northwest Connecticut United Way's May 12th Woman of the Year Gala at Torrington Country Club.



O&G Vice-President Kara Oneglia pictured with Northwest CT Chamber of Commerce Women's Leadership Initiative Committee Co-Chairs Kara Paganini-Muth and Cailin Cerruto

Protein Sciences Corporation - In light of the growing concern over recent Avian Influenza outbreaks in China, Protein Sciences Corporation, maker of the highly effective Flublok® Influenza Vaccine, announced today that the *Biomedical Advanced Research and Development Authority (BARDA)* has requested the development of two new pandemic vaccine candidates to combat new H7N9 strains, one representing a pathogenic H7N9 virus. BARDA is a division of the Office of the Assistant Secretary for Preparedness and Response within the U.S. Department of Health and Human Services. The request for a vaccine candidate is made under the BARDA contract awarded to the Company in September as part of the Authority's medical countermeasures against pandemic influenza and influenza strains with pandemic potential. Protein Sciences' recombinant technology is the only FDA approved platform that can produce influenza vaccines fast enough and without use of influenza virus in manufacturing to meet the needs of an emerging pandemic. Traditionally, egg-based vaccines are available 16-20 weeks after the declaration of a pandemic. Protein Sciences' technology allows for a highly effective recombinant vaccine to be available in approximately 12-16 weeks.

Sonic of CT invites you to sign up for the Sonic Drive In app on your mobile device and be the first to receive their deals & promotions! Or stop by and enjoy their Daily Specials, Happy Hour from 2 to 5pm, with half price fountain drinks & slushes. Sonic Nights are back with half price shakes and ice cream slushes after 8 pm. Have a Super Sonic Day! Sonic of CT is located at 1033 North Colony Rd., Wallingford.



Ulbrich Boys & Girls Club - Since the summer of 2016, owner of South Broad Paint & Home Center, Mark DeLucia has extended his business's helping hand towards donating paint supplies to the Club. Through his generosity, the Club has re-painted more than half of the facility at no cost. Recently, South Broad Street Paint & Home Center provided materials for the Club to participate in a Boys & Girls Club of America "Blue Door" contest. South Broad Paint & Home Center is located at 1267 S. Broad St., Wallingford. Ulbrich Boys & Girls Club is located at 72 Grand St., Wallingford.

Horace C. Wilcox Technical High School - On March 6th, Sen. Len Suzio visited the Meriden-Markham Airport garage to observe the work being done on a light sport aircraft by Wilcox Technical High School students and the local nonprofit flight club www.27.eaachapter.org | Experimental Aircraft Association Chapter 27. EAA27 has been meeting with a group of about a dozen teens for the past two years, mentoring them as they construct an RV 12, a popular aircraft, from a kit. Suzio praised the students and their mentors on their skillful work. Horace C. Wilcox Technical High School is located at 298 Oregon Rd., Meriden.



South Central CT Substance Abuse Council, Inc. - Have the conversation! Talking with someone you know about a potential gambling problem can be difficult. Remember, you can't stop the person from playing; only he or she can make the decision to stop. Choose the right moment, speak in a caring and understanding tone and hear what he or she is saying. To start this conversation:

- Tell him that you care about him and you're concerned about how he is acting.
- Tell her exactly what she has done that concerns you.
- Tell him how his behavior is affecting other people. Be specific.
- Be clear about what you expect from her--"I want you to talk to someone about your gambling." And what she can expect from you--"I won't cover for you anymore."
- After you've told him what you've seen and how you feel, allow him to respond. Listen with a non-judgemental attitude.
- Let her know you are willing to help, but don't try to counsel her yourself.
- Give information, not advice.

- Encourage him to call the toll-free helpline 1-800-522-4700 | Courtesy of National Council on Problem Gambling and The South Central CT Substance Abuse Council; sccsac.org; sccsac@aol.com



Workforce Alliance - NEW on Workforce Today podcast: Now What? Economist Paul Harrington on jobs, wages, youth & automation: http://hwcdn.libsyn.com/p/a/a/b/aab-fe771032cccb1/WFCTodayE06.mp3?c_id=14768923&expiration=1491486966&hwt=b11b620b5f87fce5aa94dbb0ff69aa50 OR <http://www.workforcealliance.biz/team/workforce-today> to check out ALL that are in this series.

Dear Chamber Partners: *We are pleased to share with you details of an outreach campaign to provide employers in Connecticut with grants for On-the-Job (OJT) training in STEM jobs.*

All full-time STEM occupations are eligible, including those in Information Technology, Finance, Manufacturing, Engineering and Healthcare. Workforce Alliance has dedicated a section of our website to On-the-Job Training: www.workforcealliance.biz/business-services/job-trainin which provides general OJT information not just for STEM but for all sectors. As with all of our business services programs, we work to identify candidates, but employers may also refer people they wish to hire to see if they qualify. Employers who hire under this program are reimbursed for wages during training at a rate of 50% for companies with 51+ employees and 75% for companies with 50 or less. CT Minimum wage applies, and reimbursements cover up to the first \$26.47/hour. Average training periods are 12-16 weeks. OJT reimbursements are for full-time, permanent positions. For Inquiries or referrals, contact: Wanda Lary (New Haven office) (203) 867-4030 x 254; Juliana Castillo (Meriden office) (203) 238-3688 x 302



Workforce Alliance Honors Dr. Dorsey L. Kendrick at 35th Annual Meeting, March 16 - Event & New Annual Report Celebrates Partnerships & Job Placements! Retiring Gateway Community College President Dr. Dorsey L. Kendrick, Ph.D. was honored on March 16 as 2017's Workforce Champion for her commitment to quality education and skills training during Workforce Alliance's 35th Annual Meeting. Labor policy and trend expert Paul Harrington was the keynote speaker. "We collaborate with a number of partners to implement employment and training services in South Central CT, but under Dr. Kendrick, the community college has become our strongest and most reliable partner," said Workforce Alliance President & CEO William Villano. Workforce Alliance also shared copies of its recently released 2015-2016 Annual Report. Highlights include serving more than 15,000 individuals throughout all American Job Centers and Workforce Alliance programs in South Central CT, partnerships with the community colleges and other training entities, and job placements throughout the state.

The report includes details on adults and youth served, plus testimonials from employers including Argo Transdata in Clinton, Aperture Optical Sciences in Meriden, and NerdsToGo in Guilford, which hired or trained staff with the help of Business Services initiatives. Summer Youth Employment Program participants are featured on the job. The opening of new American Job Centers in Meriden and within the New Haven Correctional Center marked high-points of the year, including a visit from former U.S. Labor Secretary Thomas Perez. Perez was recently named the new Democratic National Committee Chair.

Download a copy of the full Workforce Alliance 2015-2016 Annual Report by visiting www.workforcealliance.biz/index.php/growth-sect/research-resources

Workforce Alliance is the workforce development board for South Central CT. In partnership with the CT Department of Labor and with funding support from the U.S. Department of Labor and other sources. Equal opportunity programs. Auxiliary aids available upon request for persons with disabilities.



At Easterseals Center for Better Hearing, our patients hear the difference every day. Many people in our community are familiar with Easterseals, but did you know that we're also proud to offer cutting-edge, high quality hearing solutions for individuals of all ages and incomes? If you find yourself struggling to hear, call Easterseals today.

Our Driver Assessment program offers thorough driving assessments to individuals who have an injury or impairment that may impact their ability to safely operate a motor vehicle.

For more information visit <http://www.easterseals.com/waterburyct/> or call Leah Nowak in the Meriden office: 203-237-1448.



18th Annual Strong, Smart, and Bold Benefit Celebration

**girls
inc.®**

Help Her Dreams Set Sail...

**Please Join us to Celebrate Girls Inc. and our Award Recipient!
Where we inspire all girls to be Strong, Smart, and Bold.**

WHEN: Wednesday, May 10, 2017

WHERE: Wallingford Country Club
195 Long Hill Road, Wallingford, CT 06492

TIME: 5:00 p.m. Cocktail Hour/Cash Bar
6:00 p.m. Dinner and Presentation

COST: \$60.00 Per Person
Choice of Chicken Florentine, or Prime Rib.



Come Celebrate our 2017 Strong, Smart, and Bold Recipient

**Marlene McGann
Retired Executive Director
South Central CT Substance Abuse Council**

CONTACT/BUSINESS NAME:

NAME(s) ATTENDING:

DINNER CHOICE:

ADDRESS: _____

PHONE: _____

Payment must be made to reserve your spot for the benefit celebration.
Payment can be remitted to Girls Inc., 130 Lincoln Street, Meriden, CT 06451
Call 203-235-7146 or email mab_girlsinc@snet.net with any questions.



THE DIAMOND JUBILEE

60TH Anniversary Dinner Dance



Friday, May 12, 2017

At Zandri's

1047 South Colony Rd., Wallingford



**Doors open at 6:00pm –Cocktails (Open Bar) and Appetizers
Dinner served Family style, Silent Auction, 50/50 Drawing
Dancing to the sounds of “Jock in the Box” Entertainment**

Tickets \$75.00 per person

Table of 8 is \$560.00



Honoring State Representative
Catherine Abercrombie

To Purchase Tickets or make a donation contact:

<https://cgcgala.eventbrite.com>

or call Child Guidance Clinic (203) 235-5767

Sponsorship & Advertising Opportunities Available

See Next Page For Details!



Child Guidance Clinic Diamond Jubilee Sponsorship and Advertising Options

Diamond Sponsor: \$5000.00

VIP Reserve Seating for 10 Company Banner displayed at Event

Name on Front Cover of Ad Book Name in all Publicity

Full page Ad in front or back cover of book Special Recognition

Platinum Sponsor: \$2500.00

VIP Reserve Seating for 8 Special Recognition as Major Sponsor

Name in all Publicity Full page Ad in prominent location of book

Gold Sponsor: \$1500.00

Reserved Seating for 8 Name in all Publicity

Full Page ad in book Special Recognition

Silver Table Top Sponsor: \$1000.00

Reserved Seating for 6 Name in all Publicity

Half Page ad in book Table Top Tent with name on each Table

Bronze Sponsor: \$500.00

Reserved Seating for 4 Name in all Publicity

Half Page Ad in book Special Recognition

Candy Bar Sponsor: \$400.00

Seating Reserved for 2 Name in Publicity

Half Page Ad in Book Special Recognition

Centerpiece Sponsor: \$400.00

Reserved Seating for 2 Name in Publicity

Half Page Ad in Booklet Recognition on Centerpiece

Ad Book:

Full Page Ad \$125 Half Page Ad \$75 Business Card \$50

Yes, we want to sponsor the Child Guidance Clinic's Diamond Jubilee at the following level:

↑ **Diamond** ↑ **Platinum** ↑ **Gold** ↑ **Silver** ↑ **Bronze** **Candy Bar** **Center Piece**

Name of Company/Individual _____

Contact _____ Telephone _____

Address _____

Email _____ Auction Donation _____

For additional information contact:

Jim Maffuid, Child Guidance Clinic at (203) 235-5767 or jmaffuid@cgccentralct.org

Please make checks payable to Child Guidance Clinic

384 Pratt Street Meriden CT 06450



Reach Customers in 2017 at these **BIG** Midstate Chamber Events!

Apr. 29 & 30: EXPO at Daffodil Fest -under the big tent at Hubbard Park-
NEW stage for interactive demos | Reach THOUSANDS of new customers
Choose 1 or 2 Days | Sell Your Products - Increase Your Visibility



Fri. May 19: Breakfast Club Celebrates with Attorney General George Jepsen
at Four Points by Sheraton | Sponsorships are Available (\$100-\$1000)



Wed. June 7: 30th Annual Golf Tournament at Hunter GC & Violi's
NEW On Course Experience | Sponsor a Veteran
This is the main fundraiser for the Sanford S. Shorr Education Awards



Tue. June 27: Health & Wellness Breakfast at Gaylord Specialty Healthcare



RSVP to Register or Sponsor:
203-235-7901
info@midstatechamber.com

ATTENTION WANNA-BE-EX-SMOKERS!!

Doing some spring cleaning?
Don't just wash your ashtrays,
throw them away!

TOBACCO FREE TUESDAY - SPRING FLING EVENTS

Every Tuesday
5:30 – 6:30pm
Meriden Health and Human
Services Department
165 Miller Street, Clinic Entrance



Tobacco Free Tuesday is a free support
group for those looking to quit smoking, and
for those that have quit that need some extra
encouragement to stay tobacco-free!



To RSVP or for more information call
Geraldyn at (203) 630-4003 or e-mail
BeTobaccoFree@meridenct.gov



Provided with funds from the Tobacco and Health Trust Fund by the
CT Department of Public Health



Platt High School Band
requests your

DONATION



We need your help to raise
\$40,000
by February 1st, 2017
for new uniforms.

Suggested donation amounts of \$100, \$250, or \$500, but any donation is appreciated. No donation is too small!

All donations are tax deductible. Tax ID #06-6001893

Donations can be mailed to Platt High School, CO Kim Forcier, 220 Coe Avenue, Meriden, CT 06451.

Checks can be made out to the Platt Band Uniform Campaign.

Please clip, fill out, and return with your donation.

Name: _____ *Phone Number:* _____

Address: _____

Email: _____ *Donation Amount:* _____





PROMOTION



EDUCATION

NOW is PRIME TIME
to JOIN Midstate Chamber of Commerce.
Kindly SHARE this APPLICATION
with your business associates!



LEADERSHIP



NETWORKING

| | |
|-----------------|----------|
| 1-5 Employees | \$280.00 |
| 6-10 Employees | \$295.00 |
| 11-20 Employees | \$410.00 |
| 21-30 Employees | \$525.00 |



The Midstate Chamber supports, promotes and serves our member businesses in Berlin, Cheshire, Meriden, Southington, Wallingford and throughout central Connecticut.
 3 Colony Street, Suite 301, Meriden, CT 06451
 Ph: 203.235.7901 Fax: 203.686.0172
 info@midstatechamber.com www.midstatechamber.com

Membership Application

Company Name: _____
 Address: _____
 City, State, Zip: _____
 Phone: _____ Fax: _____
 Company Website: _____
 Type of Business/Classification: _____
 # of Owners: ____ # of Employees: ____ Full-Time ____ Part-Time ____ Year Founded: ____
 Contact Person: _____ Contact's Phone: _____
 Contact's E-Mail: _____

How Did You Learn About Us?

Chamber Activity / Interests:

Promotion: ☐ Member Directory Advertising ☐ Web Site Advertising ☐ Chamber Business Expo ☐ Newsletter Advertising ☐ Marketing Committee, etc
Education: ☐ Education Committee ☐ Education Awards ☐ Workshops ☐ School-Business Partnerships ☐ Hispanic Outreach Leaders in Action (HOLA), etc.
Networking: ☐ Business After Hours ☐ Breakfast Club Celebrates ☐ Annual Meeting/Dinner ☐ Annual Golf Tournament ☐ Young Business Leaders of CT ☐ Ambassadors ☐ Membership Committee, etc.
Leadership: ☐ Government & Business Development Committee ☐ Pizza, Pasta, & Politics ☐ Health Insurance, etc

**** Please Include Your "Web Words":** Web Words are a 25-30 word description of your business that appears with your Member Directory listing on www.midstatechamber.com: _____

New member add on – Specials—reserve now and save \$50:

- ☐ \$100 web image (appears next to your web listing making you stand out) - \$150 value
☐ \$100 3 month newsletter ad (business card size) - \$150 value

**** Please E-Mail Your Key Employees Information to info@midstatechamber.com.** Key employees are employees who you wish to receive additional Chamber updates/information and who may be attending events. Key employee information may consist of name, title, direct phone number or extension and e-mail address.

Card# _____ Exp. _____ Card Zip Code _____ Verification Code _____



Signature _____

• **A one-time \$15 dollar set up fee is due at time of application**

Membership dues in this organization may be tax deductible as an ordinary & necessary business expense. Dues paid to this 501c(6) are not a charitable tax deduction. The organization serves as an advocate for and promotes its member businesses.





*** **STAND OUT** ***
WITH AN AD IN THE
2017-18
MAGAZINE



InSight

The Midstate Chamber Magazine

Magazine Ad Options

YES! I LOVE the LOOK of the MAGAZINE and WANT TO RESERVE an AD NOW for the 2017-18 edition! IF YOU ARE DOING BUSINESS IN THIS REGION...YOU MUST BE IN THE MAGAZINE – YOU WILL STAND OUT WITH AN AD – and we've created pricing for every budget.

- Ads will be based on 2 1/2 x 2 1/2 sized panels of ad space – in virtually any configuration on a page of 12 panels. (3 across and 4 down) The **first panel is only \$290 (early bird)** which is a lower entry price point than previous books.
- BE CREATIVE! SPLIT your ad space – purchase 1/2 page – 6 panels and have 1/4 page in TWO areas! Do the same with an ADVERTORIAL: 3 panel ad with 3 panel info / tip from your business!

Early Bird Specials (commitment and payment) run through December 15, 2016.

| YES! Reserve My Space | Number of Panels | Regular Price After 12/15 | Early Bird By 12/15 | Early Bird Saves | |
|-----------------------------|-------------------------|------------------------------------|------------------------------|------------------------|-------|
| ✓ | Popular Sizes | | | | |
| | Single Panel | 1 | \$ 300 | \$ 290 | \$ 10 |
| | Double H or V | 2 | 535 | 475 | 60 |
| | Quarter Page H | 3 | 770 | 660 | 110 |
| | Third Page H or V | 4 | 1,005 | 845 | 160 |
| | Half Page | 6 | 1,475 | 1,215 | 260 |
| | Two Thirds | 8 | 1,945 | 1,585 | 360 |
| | Inside Full Pages | 12 | 2,885 | 2,325 | 560 |
| | Full Page I/O Covers | 12 | 3,095 | 2,495 | 600 |

Affordable entry ad rate for EVERY business!

This allows a full 7.5" x 10" of messaging!
Only 3 prime opportunities – and they INCLUDE a top banner ad on the chamber's web site!

Here are some examples of ad layouts based on panel sizes...AND EARLY BIRD RATES!

| | | | |
|--|---|---|---|
| Double 5 x 2.5 2 panels \$ 475 | Quarter Page 7.5 x 2.5 \$ 660 3 panels | Third Page 2.5 x 10 \$ 845 4 panels | Two Thirds 5 x 10 \$ 1,585 6 Panels |
| Double 2.5 x 5 2 panels \$ 475 | Half Page 7.5 x 5 \$ 1,215 6 panels | Third Page 5 x 5 \$ 845 4 panels | |
| Single 1 panel 2.5 x 2.5 \$ 290 | | | |

THIS MAGAZINE IS THE GO-TO RESOURCE viewed by thousands of people: It is a Chamber Membership Directory, Communities Guide and MORE. This full color Resource Guide is the go-to guide for businesses and residents! A minimum of 5,000 copies (print & digital) are distributed to the Chamber Membership, at Member locations, at special events & in relocation packets. YOUR AD promotes your business / organization AND illustrates your PRIDE in being connected with our central CT region.

EARLY BIRD AD RESERVATION FORM: Make your selections in above grid (✓)

Company: _____ Contact: _____

____ Bill Me (Payment **must be received by December 15th, 2016** to receive the Early Bird Rate!)

____ Check Enclosed or Credit Card - Card # _____

Exp. Date: _____ Ver. Code: _____ Zip Code: _____

Submit to: **Midstate Chamber of Commerce, Inc.**, 3 Colony St., Suite 301, Meriden, CT 06451
Ph: 203-235-7901 / Fax: 203-686-0172 / info@midstatechamber.com www.midstatechamber.com